

FOR LEASE

367 Poplar Avenue

Unit 12 - (+/-) 933 sf Available

Unit 13 - (+/-) 733 sf Available

PROPERTY HIGHLIGHTS

- Spacious and open warehouse providing ample storage or manufacturing space
- Shared grade and dock loading and access to freight elevator
- 60amp single phase service, currently being upgraded to 3 phase
- Zoned M1 - Allows for a variety of industrial and commercial uses

Lease Rate:

Unit 12: \$7.00 psf Net

Unit 13: \$8.00 psf Net

CAM & Tax: \$2.60 psf (2023 est.)

Utilities included

Chris Hourihan
Associate

T 204 934 6215

C 204 995 0225

chris.hourihan@cwstevenson.ca

For Lease

367 Poplar Avenue



UNIT 13



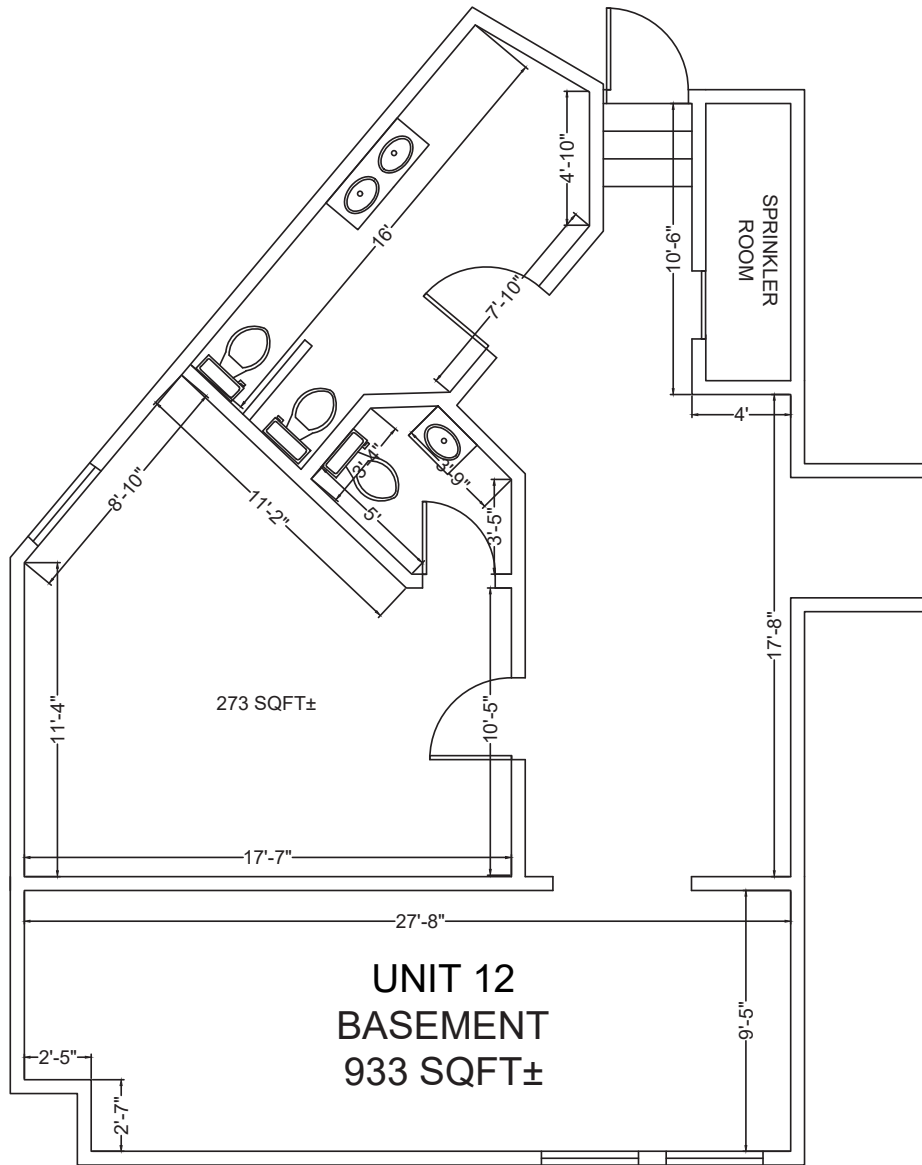
Independently Owned and Operated / A Member of the Cushman & Wakefield Alliance ©2023 Cushman & Wakefield. All rights reserved. The information contained in this communication is strictly confidential. This information has been obtained from sources believed to be reliable but has not been verified. NO WARRANTY OR REPRESENTATION, EXPRESS OR IMPLIED, IS MADE AS TO THE CONDITION OF THE PROPERTY (OR PROPERTIES) REFERENCED HEREIN OR AS TO THE ACCURACY OR COMPLETENESS OF THE INFORMATION CONTAINED HEREIN, AND SAME IS SUBMITTED SUBJECT TO ERRORS, OMISSIONS, CHANGE OF PRICE, RENTAL OR OTHER CONDITIONS, WITHDRAWAL WITHOUT NOTICE, AND TO ANY SPECIAL LISTING CONDITIONS IMPOSED BY THE PROPERTY OWNER(S). ANY PROJECTIONS, OPINIONS OR ESTIMATES ARE SUBJECT TO UNCERTAINTY AND DO NOT SIGNIFY CURRENT OR FUTURE PROPERTY PERFORMANCE.

For Lease



367 Poplar Avenue

UNIT 12

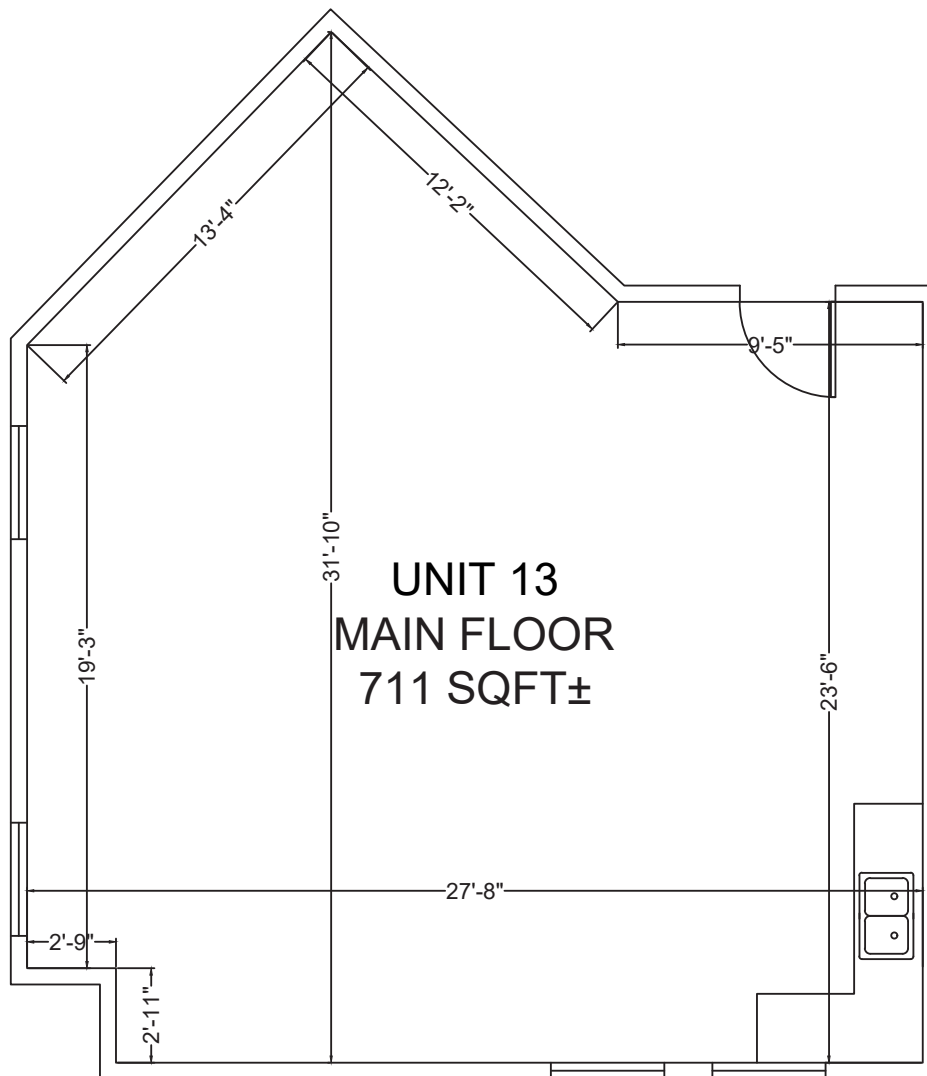


For Lease



367 Poplar Avenue

UNIT 13

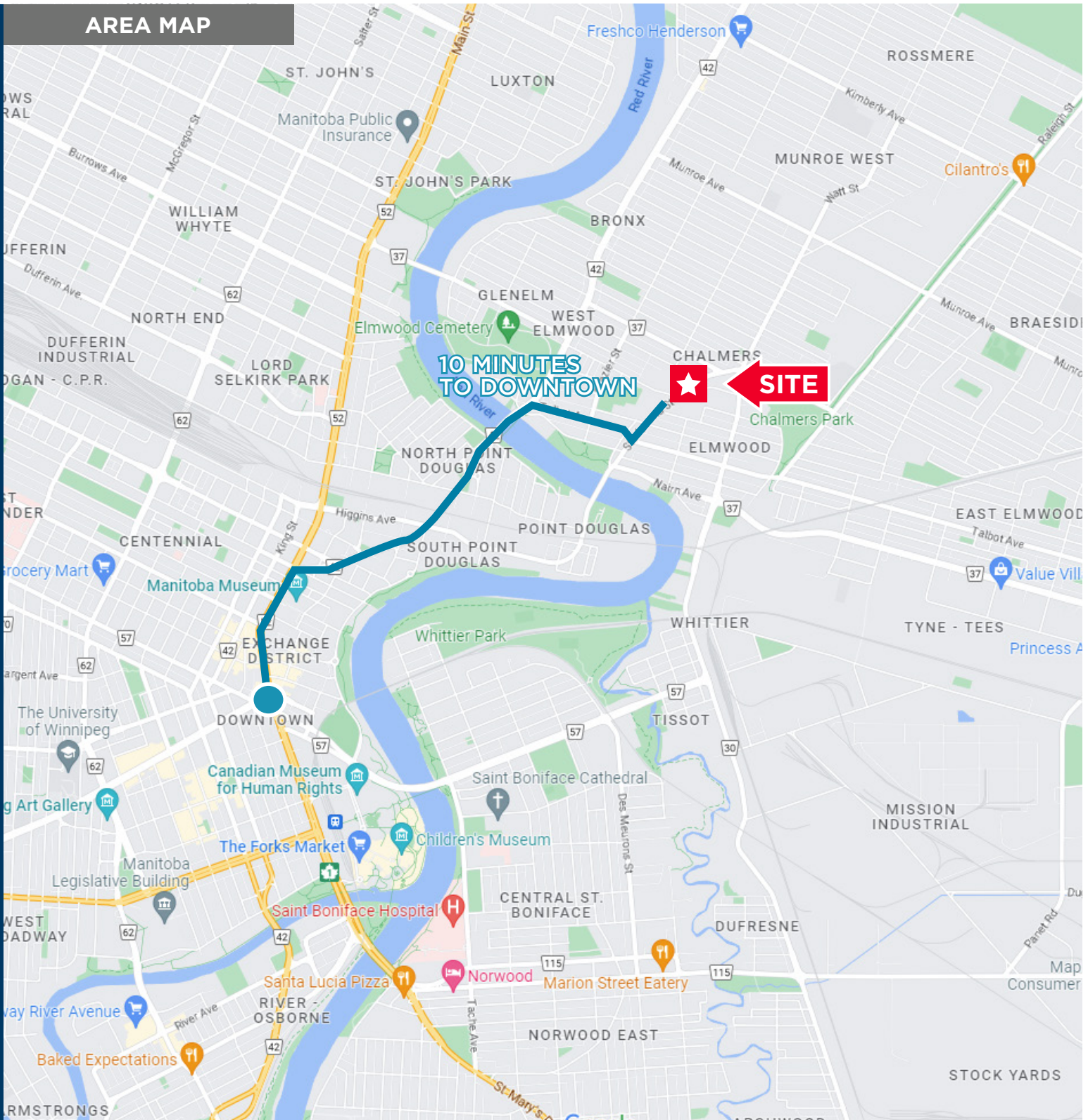


For Lease



367 Poplar Avenue

AREA MAP



Independently Owned and Operated / A Member of the Cushman & Wakefield Alliance ©2023 Cushman & Wakefield. All rights reserved. The information contained in this communication is strictly confidential. This information has been obtained from sources believed to be reliable but has not been verified. NO WARRANTY OR REPRESENTATION, EXPRESS OR IMPLIED, IS MADE AS TO THE CONDITION OF THE PROPERTY (OR PROPERTIES) REFERENCED HEREIN OR AS TO THE ACCURACY OR COMPLETENESS OF THE INFORMATION CONTAINED HEREIN, AND SAME IS SUBMITTED SUBJECT TO ERRORS, OMISSIONS, CHANGE OF PRICE, RENTAL OR OTHER CONDITIONS, WITHDRAWAL WITHOUT NOTICE, AND TO ANY SPECIAL LISTING CONDITIONS IMPOSED BY THE PROPERTY OWNER(S). ANY PROJECTIONS, OPINIONS OR ESTIMATES ARE SUBJECT TO UNCERTAINTY AND DO NOT SIGNIFY CURRENT OR FUTURE PROPERTY PERFORMANCE.



**CUSHMAN &
WAKEFIELD**
Winnipeg



Stevenson

Chris Hourihan
Associate

T 204 934 6215

C 204 995 0225

chris.hourihan@cwstevenson.ca

Independently Owned and Operated / A Member of the Cushman & Wakefield Alliance ©2023
Cushman & Wakefield. All rights reserved. The information contained in this communication is
strictly confidential.

This information has been obtained from sources believed to be reliable but has not been verified.

NO WARRANTY OR REPRESENTATION, EXPRESS OR IMPLIED, IS MADE AS TO THE
CONDITION OF THE PROPERTY (OR PROPERTIES) REFERENCED HEREIN OR AS TO
THE ACCURACY OR COMPLETENESS OF THE INFORMATION CONTAINED HEREIN, AND
SAME IS SUBMITTED SUBJECT TO ERRORS, OMISSIONS, CHANGE OF PRICE, RENTAL OR
OTHER CONDITIONS, WITHDRAWAL WITHOUT NOTICE, AND TO ANY SPECIAL LISTING
CONDITIONS IMPOSED BY THE PROPERTY OWNER(S). ANY PROJECTIONS, OPINIONS OR
ESTIMATES ARE SUBJECT TO UNCERTAINTY AND DO NOT SIGNIFY CURRENT OR FUTURE
PROPERTY PERFORMANCE.

