


**FOR SALE**

# Reimer Road at Deacon's Corner

## Industrial Land Available

**Murray Goodman**  
Senior Vice President & Principal  
T 204 928 5009  
C 204 990 4800  
[murray.goodman@cwstevenson.ca](mailto:murray.goodman@cwstevenson.ca)

**Stephen Sherlock**  
Vice President  
T 204 928 5011  
C 204 799 5526  
[steve.sherlock@cwstevenson.ca](mailto:steve.sherlock@cwstevenson.ca)



TRANS-CANADA HWY  
REIMER RD

 **CUSHMAN &  
WAKEFIELD**  
Winnipeg

 **Stevenson**

FOR SALE

# Reimer Road Land



(+/-) 4.13 Acres Available

## PROPERTY HIGHLIGHTS

- Located in the Deacon's Corner, a highly visible and recognizable location
- Subdivision in progress to create six 0.69 acre commercial lots
- Approaches installed and drainage easements in place
- Rare opportunity to acquire high exposure commercial land
- No city of Winnipeg Business Taxes
- Gas and Hydro to the lot line; holding tanks and wells for sewer and water
- Highway Commercial Zoning

**Sale Price: \$1,300,950**

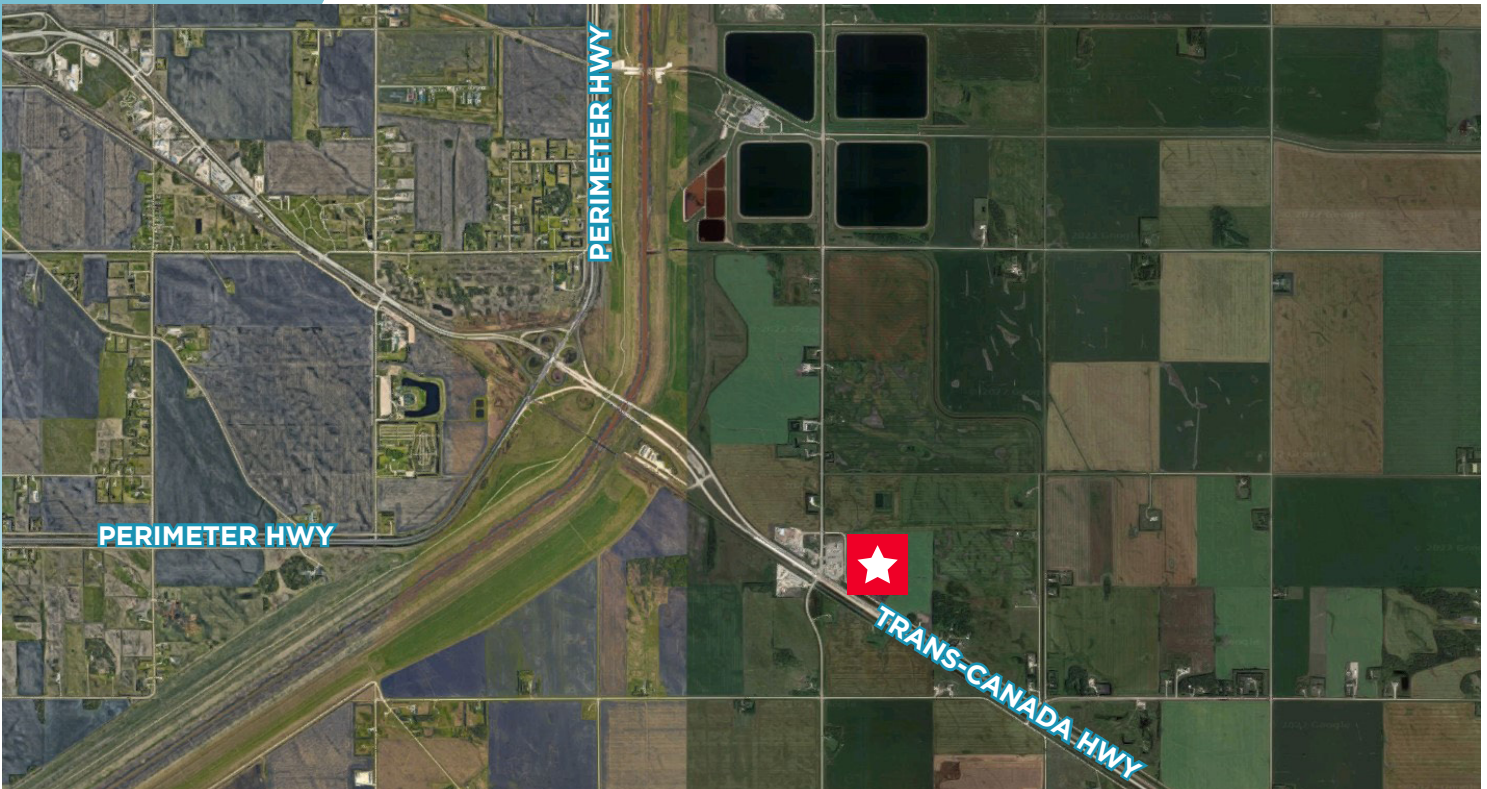
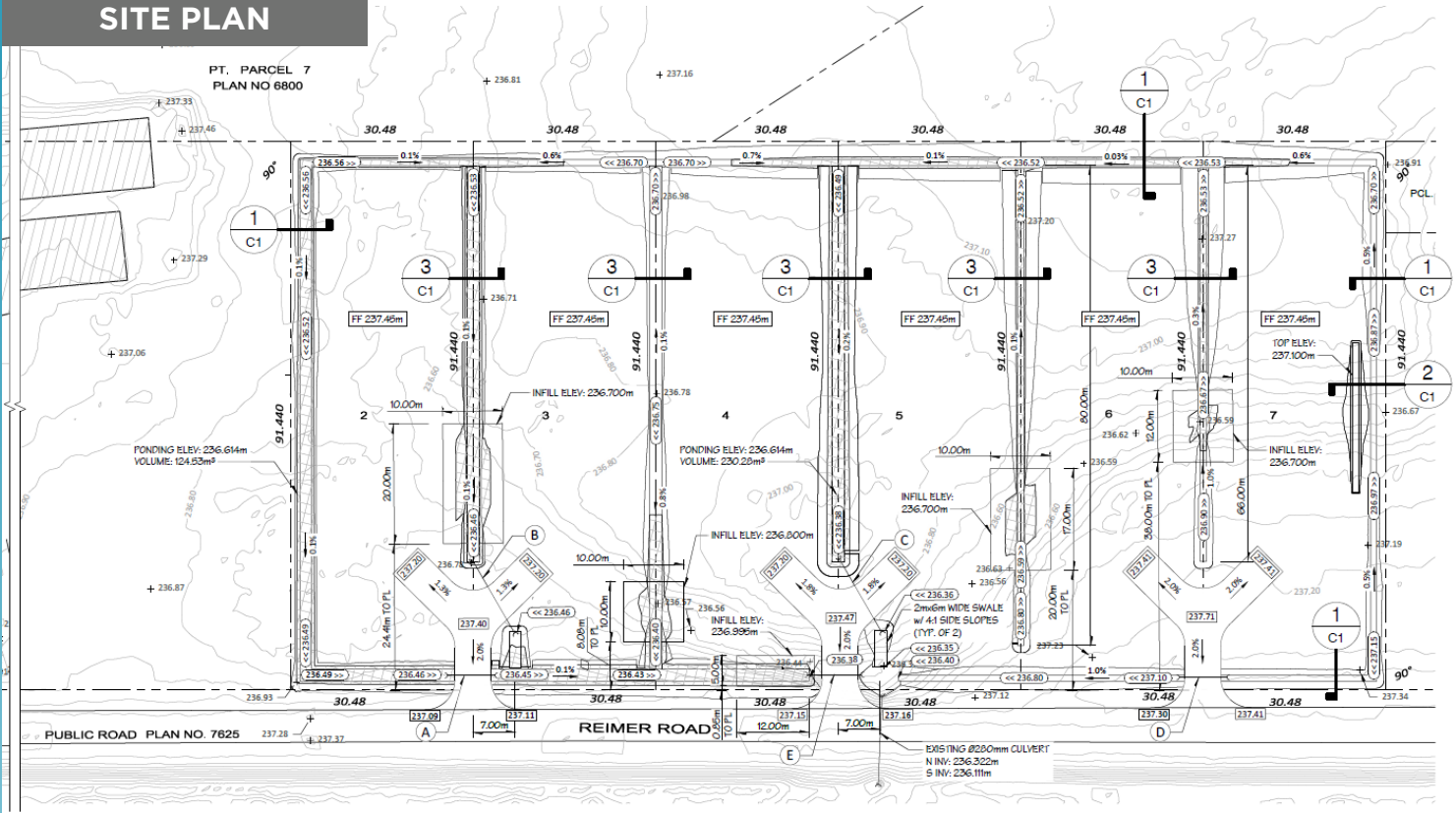
**(\$315,000 per acre)**



# FOR SALE

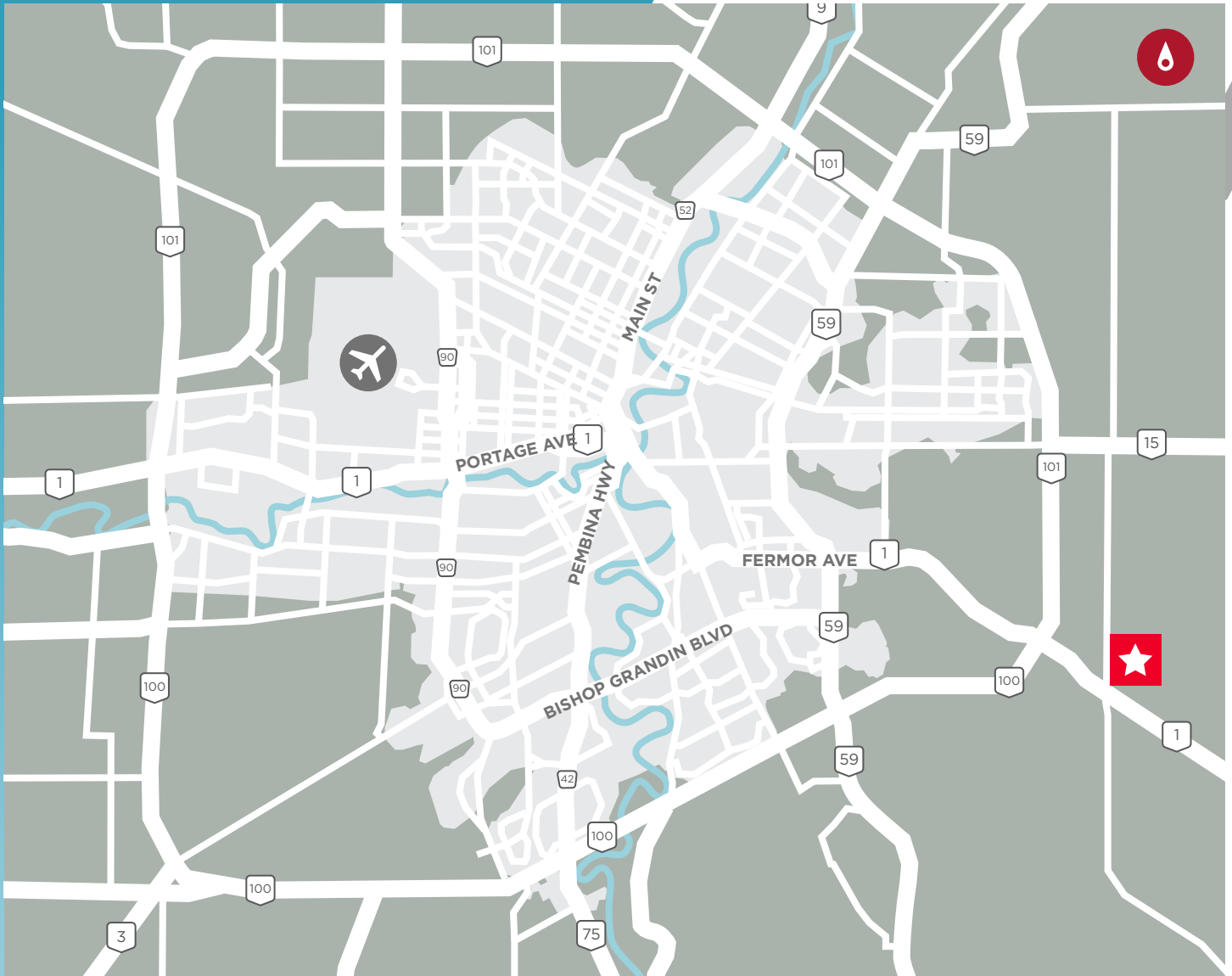
## Reimer Road Land

### SITE PLAN



# FOR SALE

## Reimer Road Land





**Murray Goodman**  
**Senior Vice President & Principal**  
T 204 928 5009  
C 204 990 4800  
murray.goodman@cwstevenson.ca

**Stephen Sherlock**  
**Vice President**  
T 204 928 5011  
C 204 799 5526  
steve.sherlock@cwstevenson.ca

Independently Owned and Operated / A Member of the Cushman & Wakefield Alliance ©2022 Cushman & Wakefield. All rights reserved.  
The information contained in this communication is strictly confidential.

This information has been obtained from sources believed to be reliable but has not been verified. NO WARRANTY OR REPRESENTATION, EXPRESS OR IMPLIED, IS MADE AS TO THE CONDITION OF THE PROPERTY (OR PROPERTIES) REFERENCED HEREIN OR AS TO THE ACCURACY OR COMPLETENESS OF THE INFORMATION CONTAINED HEREIN, AND SAME IS SUBMITTED SUBJECT TO ERRORS, OMISSIONS, CHANGE OF PRICE, RENTAL OR OTHER CONDITIONS, WITHDRAWAL WITHOUT NOTICE, AND TO ANY SPECIAL LISTING CONDITIONS IMPOSED BY THE PROPERTY OWNER(S). ANY PROJECTIONS, OPINIONS OR ESTIMATES ARE SUBJECT TO UNCERTAINTY AND DO NOT SIGNIFY CURRENT OR FUTURE PROPERTY PERFORMANCE.

