

## OFFICE/RETAIL FOR SALE

# 68 Railway Avenue Pierson, MB

## Well Maintained Single Tenant Office/Retail Building

**Brett Intrater**

**Senior Vice President**

T 204 999 1238

brett.intrater@cwstevenson.ca

**Glen Tosh**

**Sales Representative/Partner**

T 204 720 6888

glentosh@royalpage.ca

**Stacie Murphy**

**Sales Associate**

T 204 441 9242

staciemurphy@royalpage.ca



**CUSHMAN &  
WAKEFIELD**  
Winnipeg



**Stevenson**

## OFFICE/RETAIL FOR SALE

# 68 Railway Avenue



(+/-) 2,000 sf Available

### PROPERTY HIGHLIGHTS

- Well maintained single tenant office/retail building for sale in Pierson Manitoba
- Former freestanding RBC retail branch located on 68 Railway Avenue Pierson's main commercial thoroughfare
- Easy access from Highway 3 and Highway 256
- Parking is available in the front and behind the building
- Pylon signage available in front of the building
- Property Taxes: \$2,572.80 (2021)

**Price Reduced!**

~~Sale Price: \$99,000.00~~

**Sale Price: \$85,000.00**



# OFFICE/RETAIL FOR SALE

## 68 Railway Ave, Pierson MB

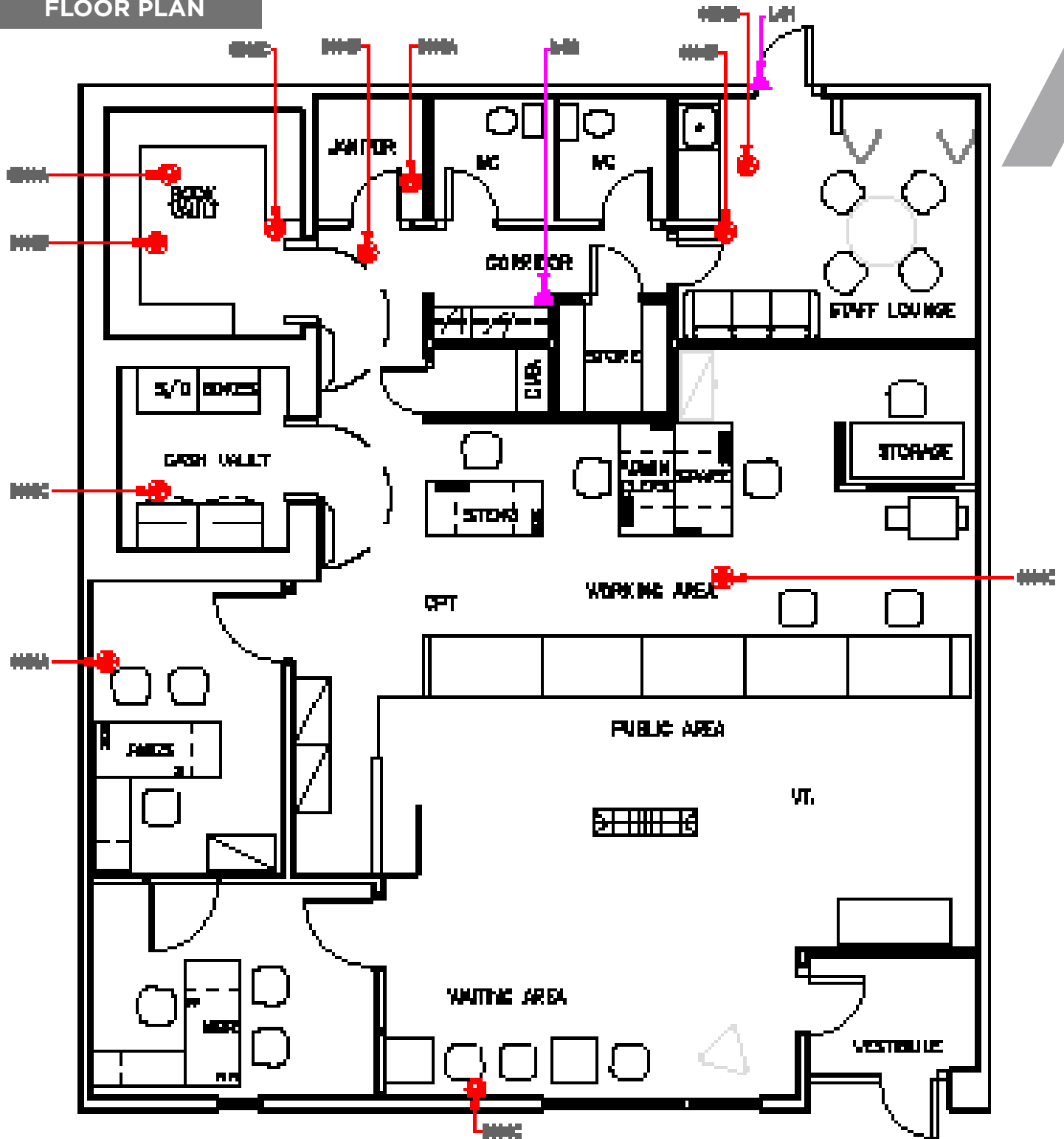


Independently Owned and Operated / A Member of the Cushman & Wakefield Alliance ©2022 Cushman & Wakefield. All rights reserved. The information contained in this communication is strictly confidential. This information has been obtained from sources believed to be reliable but has not been verified. NO WARRANTY OR REPRESENTATION, EXPRESS OR IMPLIED, IS MADE AS TO THE CONDITION OF THE PROPERTY (OR PROPERTIES) REFERENCED HEREIN OR AS TO THE ACCURACY OR COMPLETENESS OF THE INFORMATION CONTAINED HEREIN, AND SAME IS SUBMITTED SUBJECT TO ERRORS, OMISSIONS, CHANGE OF PRICE, RENTAL OR OTHER CONDITIONS, WITHDRAWAL WITHOUT NOTICE, AND TO ANY SPECIAL LISTING CONDITIONS IMPOSED BY THE PROPERTY OWNER(S). ANY PROJECTIONS, OPINIONS OR ESTIMATES ARE SUBJECT TO UNCERTAINTY AND DO NOT SIGNIFY CURRENT OR FUTURE PROPERTY PERFORMANCE.

# OFFICE/RETAIL FOR SALE

## 68 Railway Ave, Pierson MB

### FLOOR PLAN



**OFFICE/RETAIL FOR SALE**  
**68 Railway Ave, Pierson MB**



**AREA MAP**





Independently Owned and Operated / A Member of the Cushman & Wakefield Alliance ©2022 Cushman & Wakefield. All rights reserved.  
The information contained in this communication is strictly confidential.

This information has been obtained from sources believed to be reliable but has not been verified. NO WARRANTY OR REPRESENTATION, EXPRESS OR IMPLIED, IS MADE AS TO THE CONDITION OF THE PROPERTY (OR PROPERTIES) REFERENCED HEREIN OR AS TO THE ACCURACY OR COMPLETENESS OF THE INFORMATION CONTAINED HEREIN, AND SAME IS SUBMITTED SUBJECT TO ERRORS, OMISSIONS, CHANGE OF PRICE, RENTAL OR OTHER CONDITIONS, WITHDRAWAL WITHOUT NOTICE, AND TO ANY SPECIAL LISTING CONDITIONS IMPOSED BY THE PROPERTY OWNER(S). ANY PROJECTIONS, OPINIONS OR ESTIMATES ARE SUBJECT TO UNCERTAINTY AND DO NOT SIGNIFY CURRENT OR FUTURE PROPERTY PERFORMANCE.

**Brett Intrater**  
**Senior Vice President**  
T 204 999 1238  
brett.intrater@cwstevenson.ca

**Glen Tosh**  
**Sales Representative/Partner**  
T 204 720 6888  
glentosh@royallepage.ca

**Stacie Murphy**  
**Sales Associate**  
T 204 441 9242  
staciemurphy@royallepage.ca

