

FOR LEASE

98 Market Avenue

Retail/Office Space

Chris Hourihan
Associate

T 204 934 6215
C 204 995 0225
chris.hourihan@cwstevenson.ca

Murray Goodman
Senior Vice President & Principal

T 204 928 5009
C 204 990 4800
murray.goodman@cwstevenson.ca



**CUSHMAN &
WAKEFIELD**
Winnipeg



Stevenson

FOR LEASE

98 Market Avenue



(+/-) 2,400 sf Beautifully Designed Office/Retail Unit

PROPERTY HIGHLIGHTS

- Blank canvas ready for tenant design and fit-up
- Main floor of a modern design 6 storey, 64 suite property
- Tucked away in the East Exchange District within close proximity to an array of amenities
- Amazing walk-ability, close to local spots including Nonsuch Brewery, Cibo, Saddlery, Kevin's, James Avenue Pumphouse, The Forks and much more
- Very accessible with multiple transit stops and parking lots nearby
- Zoned D

Lease Rate: \$16.00 psf Net

CAM & Tax: TBD



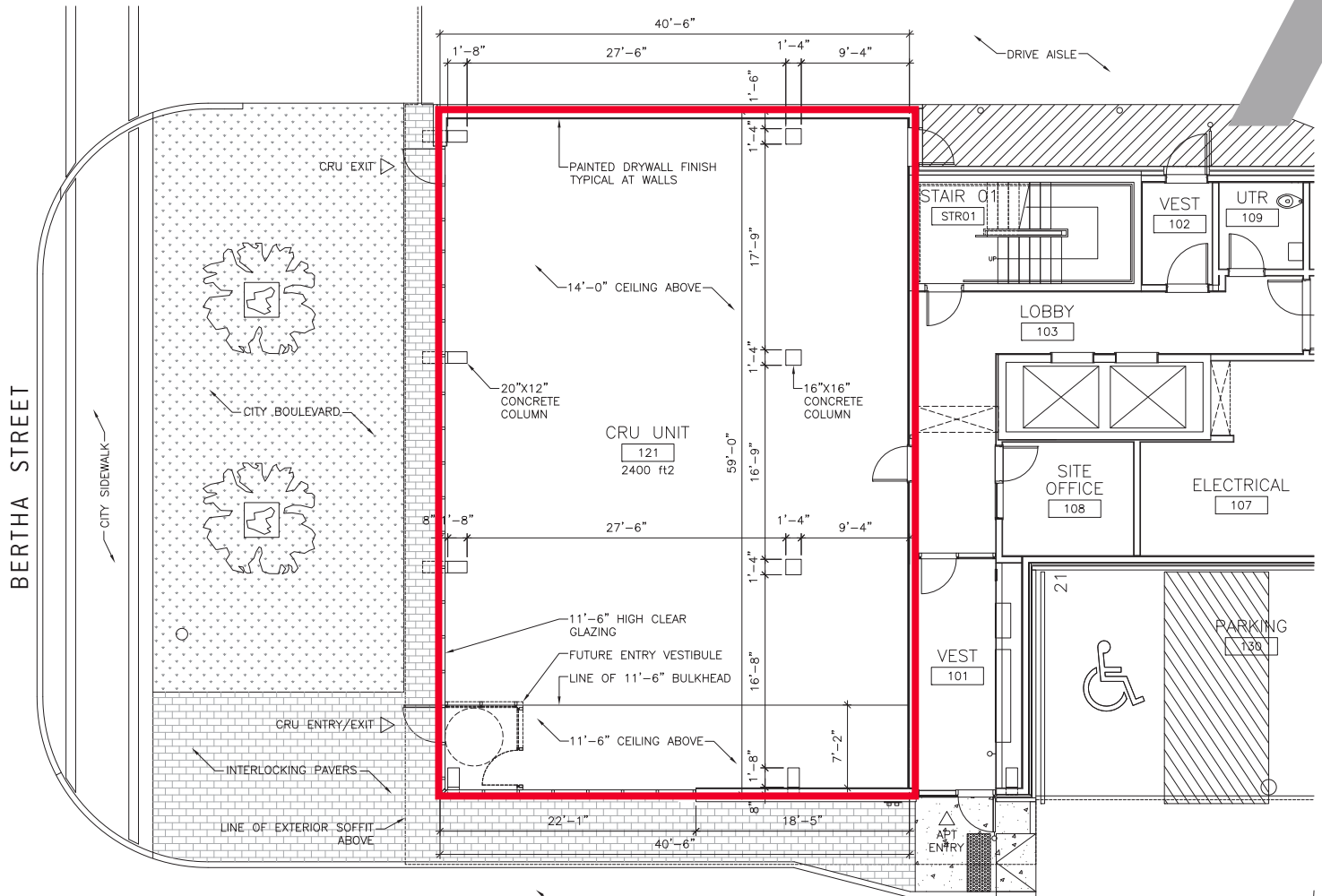
FOR LEASE 98 Market Avenue



FOR LEASE

98 Market Avenue

FLOOR PLAN

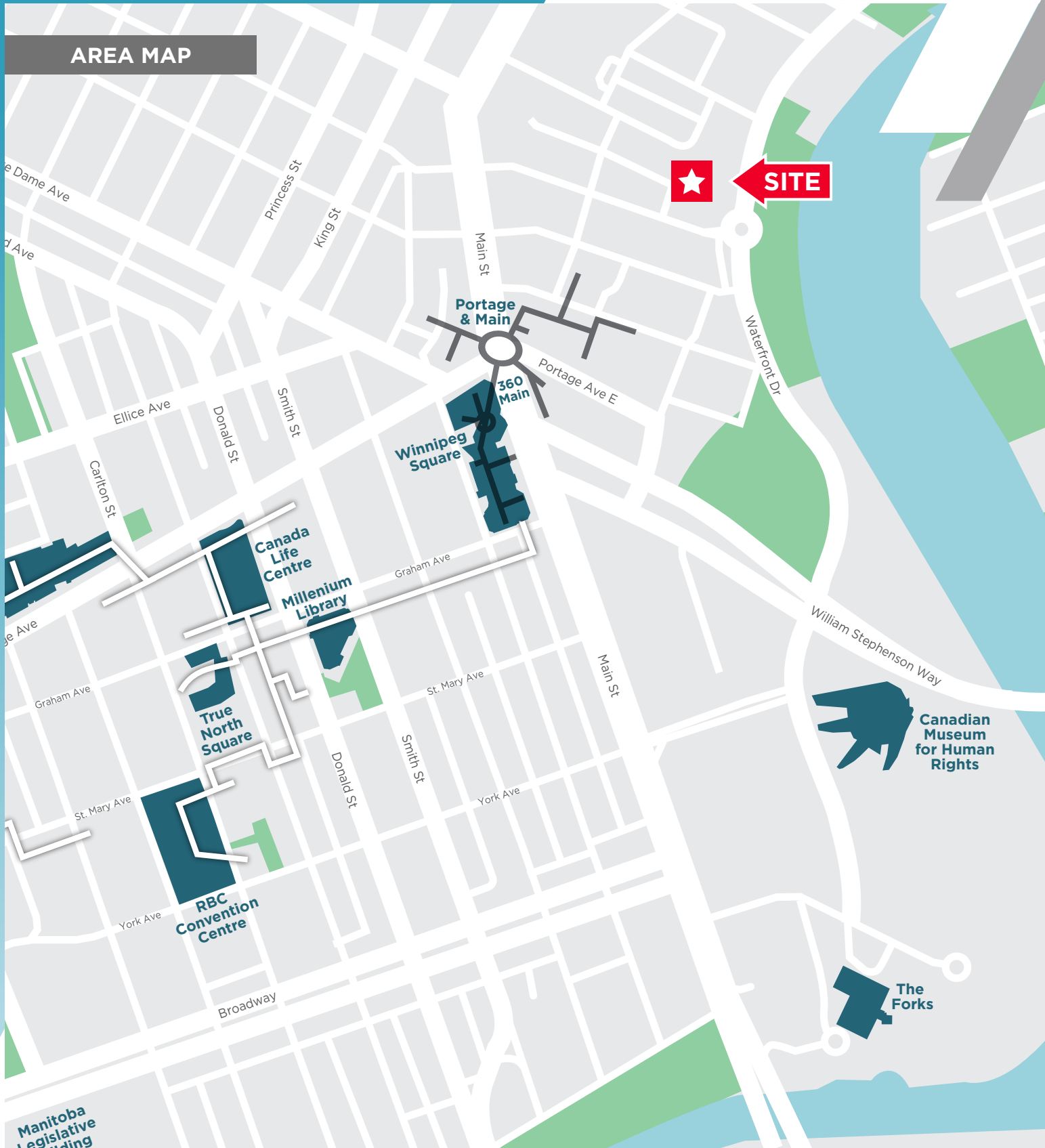


FOR LEASE

98 Market Avenue

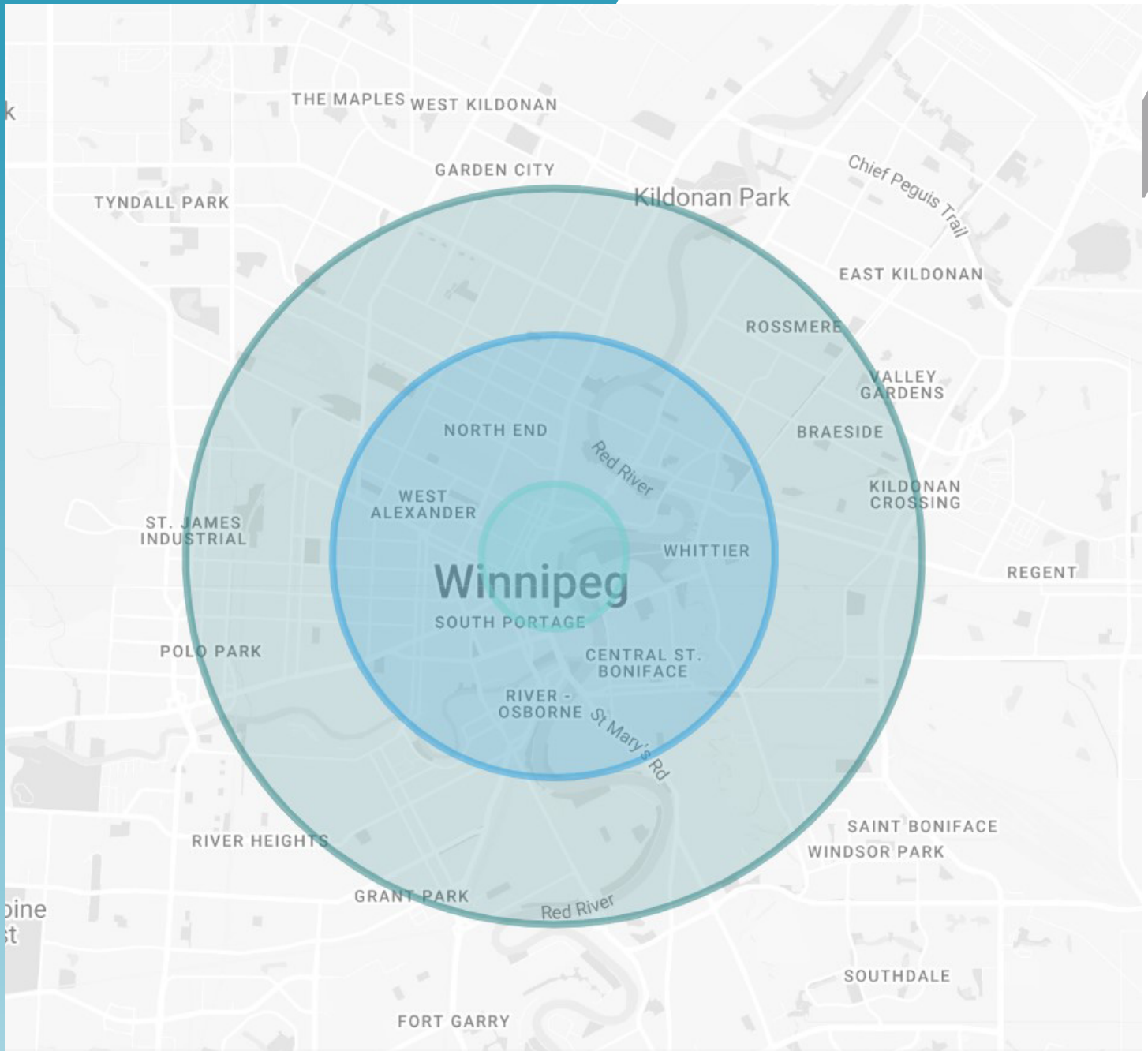


AREA MAP



FOR LEASE

98 Market Avenue



	POPULATION	MEDIAN AGE	TOTAL HOUSEHOLDS	HOUSEHOLD INCOME
1KM	7,431	36	2,780	\$65,942.03
3KM	111,848	36	49,769	\$61,415.87
5 KM	242,131	37	102,036	\$75,863.14

Independently Owned and Operated / A Member of the Cushman & Wakefield Alliance ©2023 Cushman & Wakefield. All rights reserved. The information contained in this communication is strictly confidential. This information has been obtained from sources believed to be reliable but has not been verified. NO WARRANTY OR REPRESENTATION, EXPRESS OR IMPLIED, IS MADE AS TO THE CONDITION OF THE PROPERTY (OR PROPERTIES) REFERENCED HEREIN OR AS TO THE ACCURACY OR COMPLETENESS OF THE INFORMATION CONTAINED HEREIN, AND SAME IS SUBMITTED SUBJECT TO ERRORS, OMISSIONS, CHANGE OF PRICE, RENTAL OR OTHER CONDITIONS, WITHDRAWAL WITHOUT NOTICE, AND TO ANY SPECIAL LISTING CONDITIONS IMPOSED BY THE PROPERTY OWNER(S). ANY PROJECTIONS, OPINIONS OR ESTIMATES ARE SUBJECT TO UNCERTAINTY AND DO NOT SIGNIFY CURRENT OR FUTURE PROPERTY PERFORMANCE.

Chris Hourihan
Associate

T 204 934 6215

C 204 995 0225

chris.hourihan@cwstevenson.ca

Murray Goodman
Senior Vice President & Principal

T 204 928 5009

C 204 990 4800

murray.goodman@cwstevenson.ca

Independently Owned and Operated / A Member of the Cushman & Wakefield Alliance ©2023 Cushman & Wakefield. All rights reserved.
The information contained in this communication is strictly confidential.

This information has been obtained from sources believed to be reliable but has not been verified. NO WARRANTY OR REPRESENTATION, EXPRESS OR IMPLIED, IS MADE AS TO THE CONDITION OF THE PROPERTY (OR PROPERTIES) REFERENCED HEREIN OR AS TO THE ACCURACY OR COMPLETENESS OF THE INFORMATION CONTAINED HEREIN, AND SAME IS SUBMITTED SUBJECT TO ERRORS, OMISSIONS, CHANGE OF PRICE, RENTAL OR OTHER CONDITIONS, WITHDRAWAL WITHOUT NOTICE, AND TO ANY SPECIAL LISTING CONDITIONS IMPOSED BY THE PROPERTY OWNER(S). ANY PROJECTIONS, OPINIONS OR ESTIMATES ARE SUBJECT TO UNCERTAINTY AND DO NOT SIGNIFY CURRENT OR FUTURE PROPERTY PERFORMANCE.

