

INDUSTRIAL FOR LEASE

Murray Park Trade Centre

Multiple Units Available

Murray Goodman
Senior Vice President & Principal
T 204 928 5009
C 204 990 4800
murray.goodman@cwstevenson.ca

Cushman & Wakefield | Stevenson
200 - 55 Donald Street
Winnipeg, Manitoba R3C 1L8
T 204 928 5000
www.cwstevenson.ca



**CUSHMAN &
WAKEFIELD**
Winnipeg



Stevenson

INDUSTRIAL FOR LEASE

Murray Park Trade Centre



PROPERTY HIGHLIGHTS

- Located in Murray Industrial Park, situated on the corner of Murray Park Road & Saulteaux Crescent
- In close proximity to major trucking routes, CentrePort and the Winnipeg Richardson International Airport
- 57 Murray Park Road is comprised of private offices and warehouse area
- 59 Murray Park Road includes nicely built out office area
- 354 Saulteaux is comprised of private offices, 2 open areas and mezzanine including boardroom/meeting room, 1 washroom, kitchenette
- Zoned M2
- Available immediately

| UNIT | SQ FT (+/-) | LOADING | CEILING HEIGHT | LEASE RATE | CAM & TAX |
|------------------------|-------------|----------------|----------------|------------|------------|
| 57 Murray Park Road | 4,693 | 1 Grade | 12' | \$8.95 psf | \$4.61 psf |
| 59 Murray Park Road | 5,236 | 1 Grade | 12' | \$8.95 psf | \$4.61 psf |
| 57+59 Murray Park Road | 9,929 | 2 Grade | 12' | \$8.95 psf | \$4.61 psf |
| 330 Saulteaux Crescent | 11,177 | 1 Dock 1 Grade | 18' | \$8.95 psf | \$4.61 psf |
| 354 Saulteaux Crescent | 5,250 | 1 Dock | 18' | \$8.95 psf | \$4.61 psf |

INDUSTRIAL FOR LEASE

Murray Park Trade Centre



57 MURRAY PARK RD

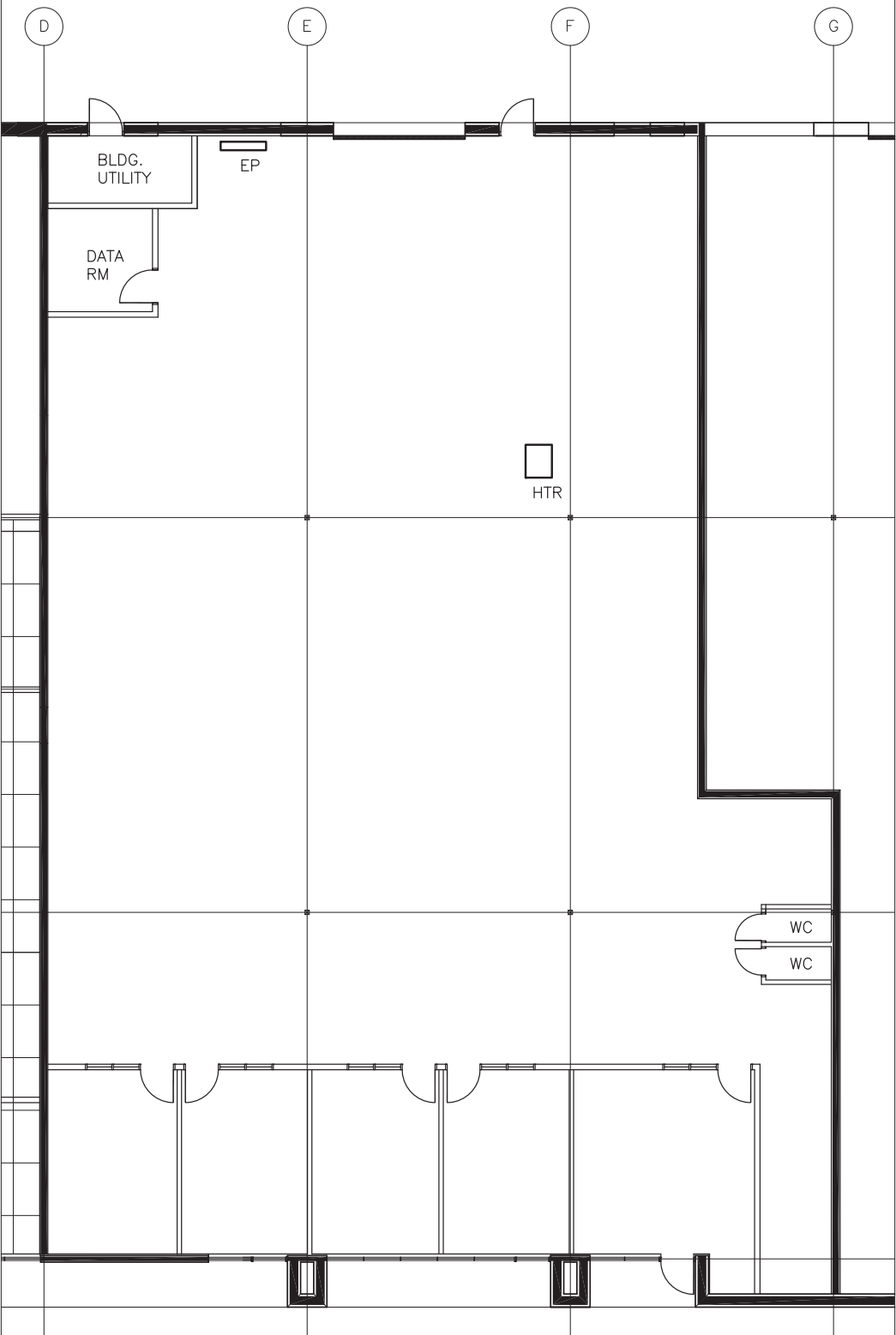


INDUSTRIAL FOR LEASE

Murray Park Trade Centre



57 MURRAY PARK RD



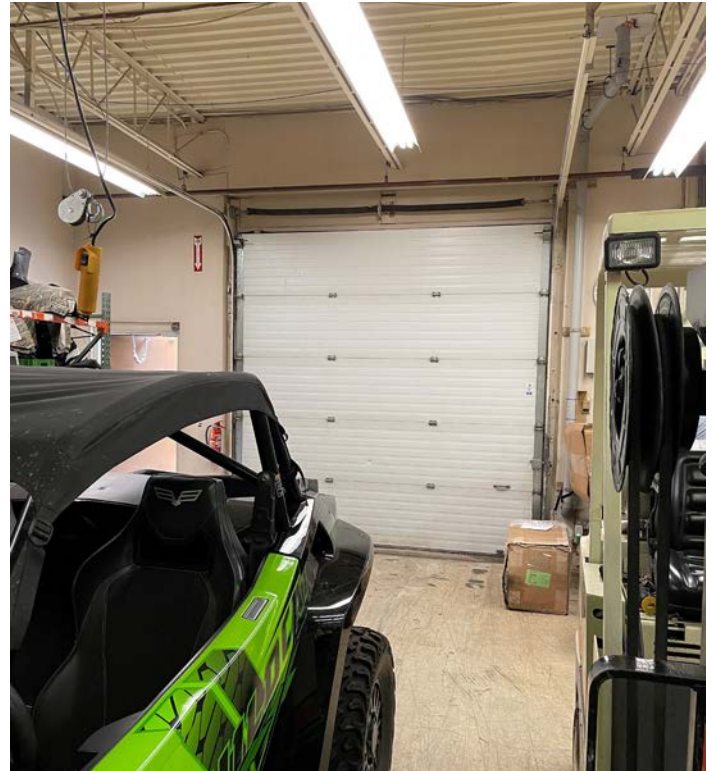
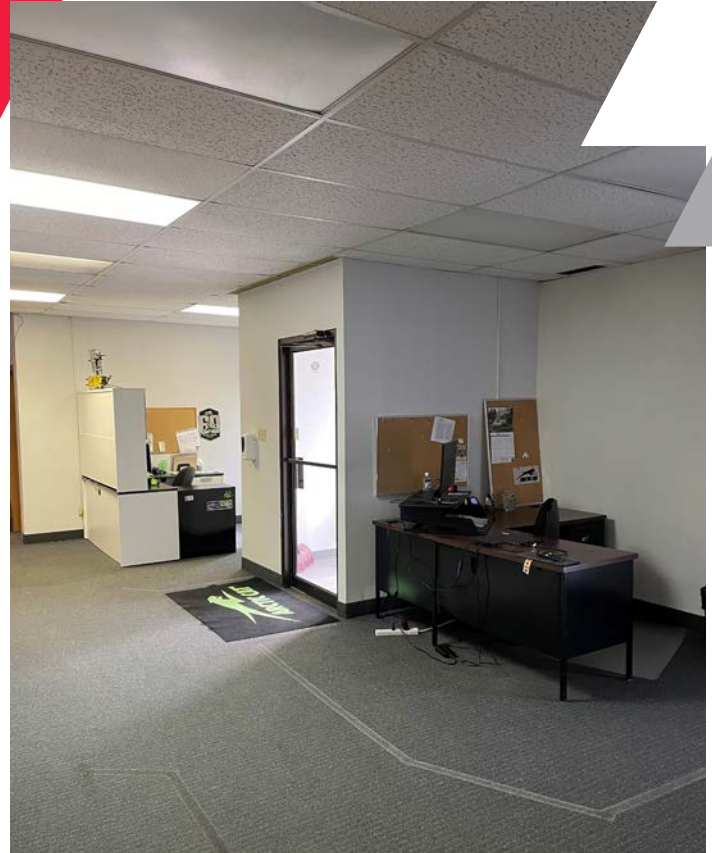
Independently Owned and Operated / A Member of the Cushman & Wakefield Alliance ©2022 Cushman & Wakefield. All rights reserved. The information contained in this communication is strictly confidential. This information has been obtained from sources believed to be reliable but has not been verified. NO WARRANTY OR REPRESENTATION, EXPRESS OR IMPLIED, IS MADE AS TO THE CONDITION OF THE PROPERTY (OR PROPERTIES) REFERENCED HEREIN OR AS TO THE ACCURACY OR COMPLETENESS OF THE INFORMATION CONTAINED HEREIN, AND SAME IS SUBMITTED SUBJECT TO ERRORS, OMISSIONS, CHANGE OF PRICE, RENTAL OR OTHER CONDITIONS, WITHDRAWAL WITHOUT NOTICE, AND TO ANY SPECIAL LISTING CONDITIONS IMPOSED BY THE PROPERTY OWNER(S). ANY PROJECTIONS, OPINIONS OR ESTIMATES ARE SUBJECT TO UNCERTAINTY AND DO NOT SIGNIFY CURRENT OR FUTURE PROPERTY PERFORMANCE.

INDUSTRIAL FOR LEASE

Murray Park Trade Centre



59 MURRAY PARK RD

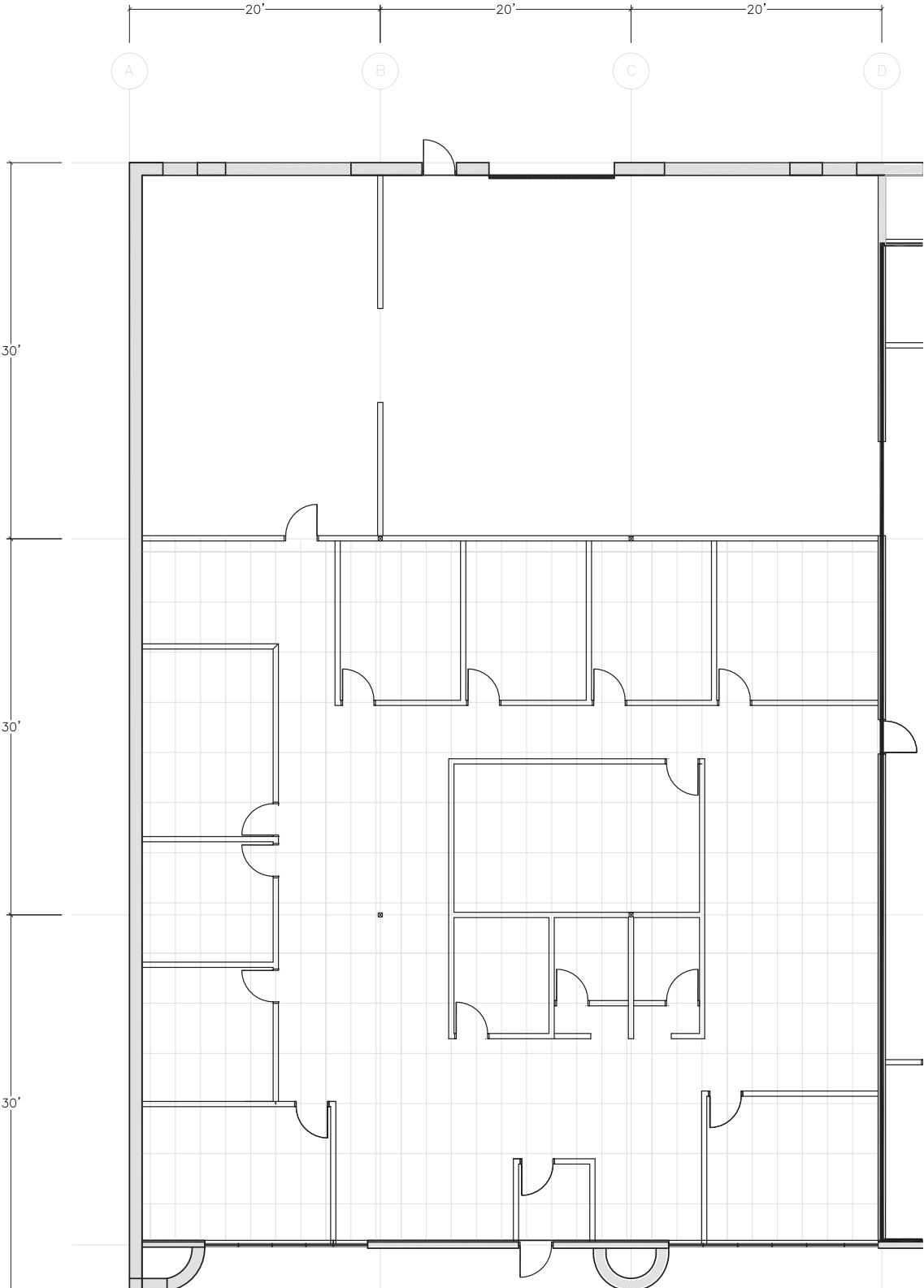


INDUSTRIAL FOR LEASE

Murray Park Trade Centre



59 MURRAY PARK RD



Independently Owned and Operated / A Member of the Cushman & Wakefield Alliance ©2022 Cushman & Wakefield. All rights reserved. The information contained in this communication is strictly confidential. This information has been obtained from sources believed to be reliable but has not been verified. NO WARRANTY OR REPRESENTATION, EXPRESS OR IMPLIED, IS MADE AS TO THE CONDITION OF THE PROPERTY (OR PROPERTIES) REFERENCED HEREIN OR AS TO THE ACCURACY OR COMPLETENESS OF THE INFORMATION CONTAINED HEREIN, AND SAME IS SUBMITTED SUBJECT TO ERRORS, OMISSIONS, CHANGE OF PRICE, RENTAL OR OTHER CONDITIONS, WITHDRAWAL WITHOUT NOTICE, AND TO ANY SPECIAL LISTING CONDITIONS IMPOSED BY THE PROPERTY OWNER(S). ANY PROJECTIONS, OPINIONS OR ESTIMATES ARE SUBJECT TO UNCERTAINTY AND DO NOT SIGNIFY CURRENT OR FUTURE PROPERTY PERFORMANCE.

INDUSTRIAL FOR LEASE

Murray Park Trade Centre



330 SAULTEAUX CRES

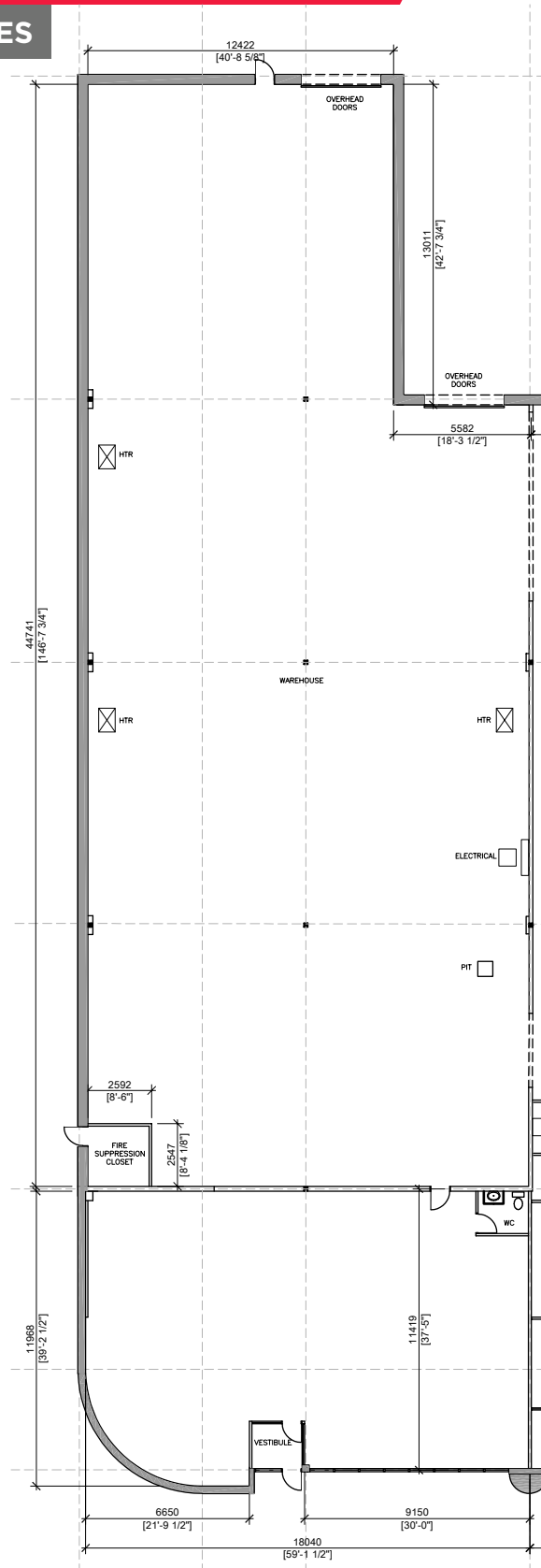


Independently Owned and Operated / A Member of the Cushman & Wakefield Alliance ©2022 Cushman & Wakefield. All rights reserved. The information contained in this communication is strictly confidential. This information has been obtained from sources believed to be reliable but has not been verified. NO WARRANTY OR REPRESENTATION, EXPRESS OR IMPLIED, IS MADE AS TO THE CONDITION OF THE PROPERTY (OR PROPERTIES) REFERENCED HEREIN OR AS TO THE ACCURACY OR COMPLETENESS OF THE INFORMATION CONTAINED HEREIN, AND SAME IS SUBMITTED SUBJECT TO ERRORS, OMISSIONS, CHANGE OF PRICE, RENTAL OR OTHER CONDITIONS, WITHDRAWAL WITHOUT NOTICE, AND TO ANY SPECIAL LISTING CONDITIONS IMPOSED BY THE PROPERTY OWNER(S). ANY PROJECTIONS, OPINIONS OR ESTIMATES ARE SUBJECT TO UNCERTAINTY AND DO NOT SIGNIFY CURRENT OR FUTURE PROPERTY PERFORMANCE.

INDUSTRIAL FOR LEASE

Murray Park Trade Centre

330 SAULTEAUX CRES



INDUSTRIAL FOR LEASE

Murray Park Trade Centre



354 SAULTEAUX CRES

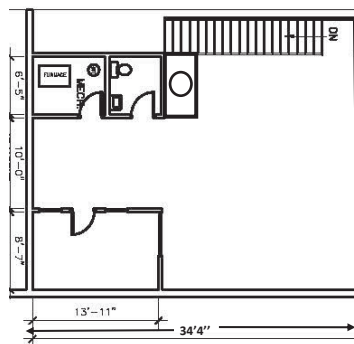
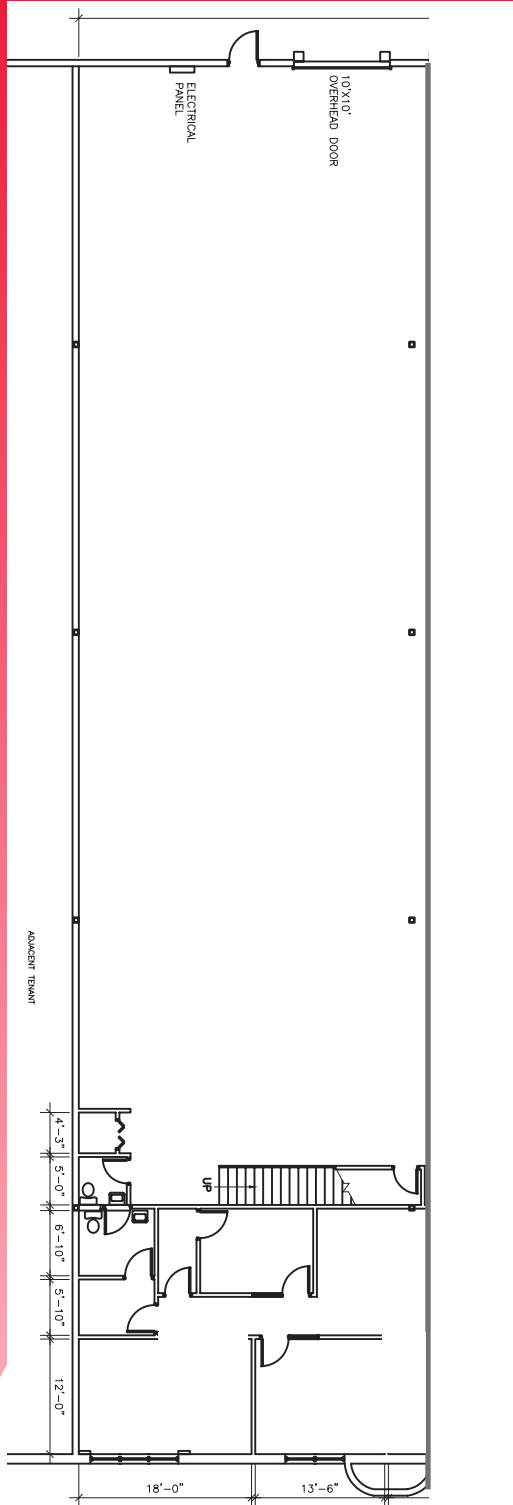


INDUSTRIAL FOR LEASE

Murray Park Trade Centre

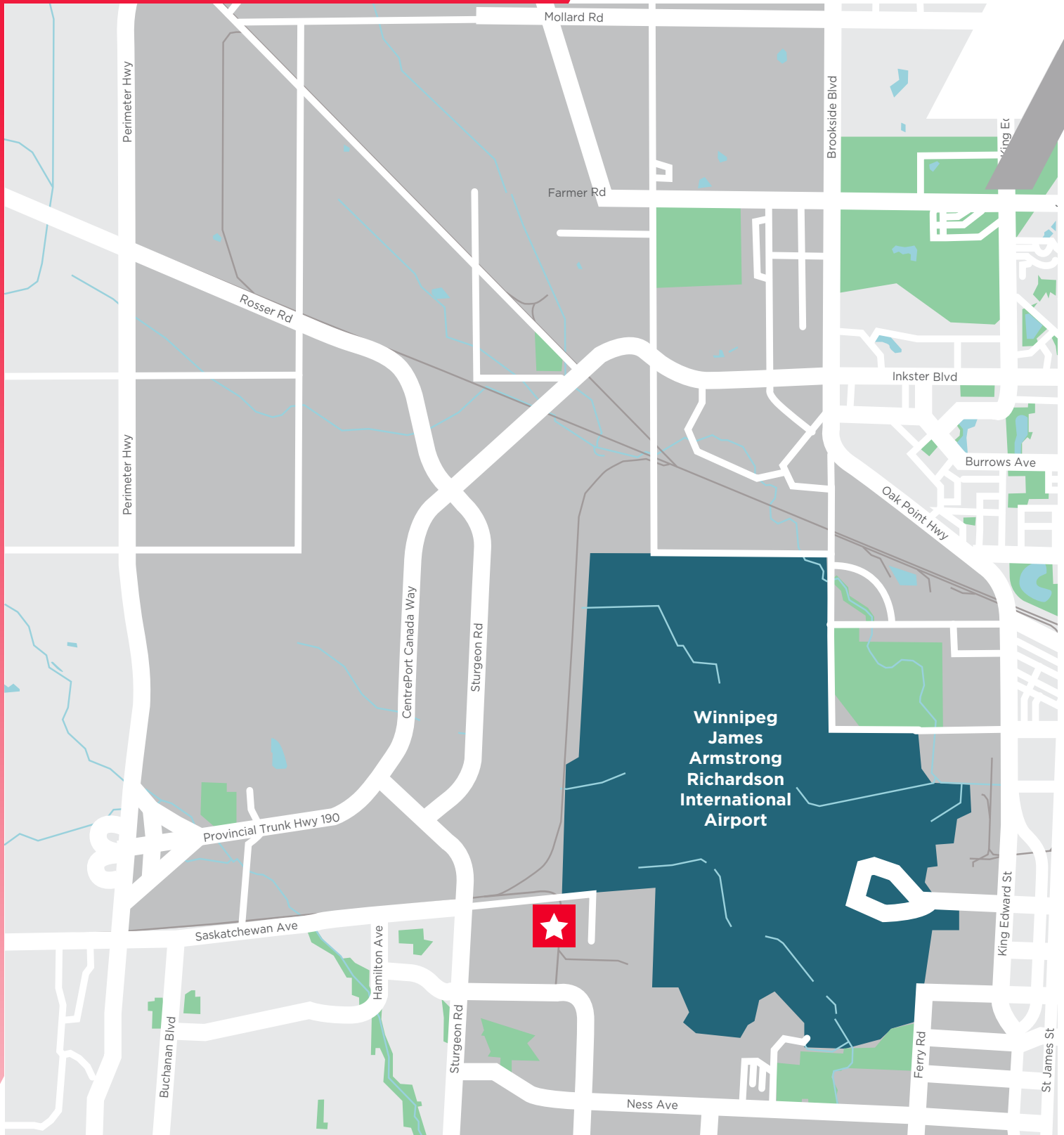


354 SAULTEAUX CRES



INDUSTRIAL FOR LEASE

Murray Park Trade Centre



Murray Goodman
Senior Vice President & Principal
T 204 928 5009
C 204 990 4800
murray.goodman@cwstevenson.ca

Cushman & Wakefield | Stevenson
200 - 55 Donald Street
Winnipeg, Manitoba R3C 1L8
T 204 928 5000
www.cwstevenson.ca

Independently Owned and Operated / A Member of the Cushman & Wakefield Alliance ©2022 Cushman & Wakefield. All rights reserved.
The information contained in this communication is strictly confidential.

This information has been obtained from sources believed to be reliable but has not been verified. NO WARRANTY OR REPRESENTATION, EXPRESS OR IMPLIED, IS MADE AS TO THE CONDITION OF THE PROPERTY (OR PROPERTIES) REFERENCED HEREIN OR AS TO THE ACCURACY OR COMPLETENESS OF THE INFORMATION CONTAINED HEREIN, AND SAME IS SUBMITTED SUBJECT TO ERRORS, OMISSIONS, CHANGE OF PRICE, RENTAL OR OTHER CONDITIONS, WITHDRAWAL WITHOUT NOTICE, AND TO ANY SPECIAL LISTING CONDITIONS IMPOSED BY THE PROPERTY OWNER(S). ANY PROJECTIONS, OPINIONS OR ESTIMATES ARE SUBJECT TO UNCERTAINTY AND DO NOT SIGNIFY CURRENT OR FUTURE PROPERTY PERFORMANCE.

