



FOR LEASE

5120 ROBLIN BOULEVARD WINNIPEG, MB

(+/-) 675 and (+/-) 908 sf of
Office Space in the Heart
of Charleswood



Ryan Munt
Senior Vice President

Ryan Munt Personal Real Estate Corporation
T 204 928 5015
C 204 298 1905
ryan.munt@cwstevenson.ca

Shae Halpin
Associate

T 204 560 2536
C 204 558 6071
shae.halpin@cwstevenson.ca



FOR LEASE

5120 ROBLIN WINNIPEG, MB

(+/-) 675 sf and (+/-) 908 sf Available

Building
Signage
Opportunities
Available

PROPERTY HIGHLIGHTS

- Excellent location for a neighborhood office in the heart of Charleswood
- Great exposure on Roblin Boulevard located between Harstone Road and Pepperloaf Crescent
- Join Taverna Rodos Restaurant & Lounge, Signature Pizza & Salads and Royal Bank
- Professionally managed
- Zoned C2

| Unit | Square Footage | Lease Rate | CAM & Tax |
|--------|----------------|-----------------|---|
| Unit C | 675 | \$15.00 psf Net | \$10.32 psf Net (2023 est) *including mgmt fee |
| Unit D | 908 | | |

Independently Owned and Operated / A Member of the Cushman & Wakefield Alliance ©2022 Cushman & Wakefield. All rights reserved. The information contained in this communication is strictly confidential. This information has been obtained from sources believed to be reliable but has not been verified. NO WARRANTY OR REPRESENTATION, EXPRESS OR IMPLIED, IS MADE AS TO THE CONDITION OF THE PROPERTY (OR PROPERTIES) REFERENCED HEREIN OR AS TO THE ACCURACY OR COMPLETENESS OF THE INFORMATION CONTAINED HEREIN, AND SAME IS SUBMITTED SUBJECT TO ERRORS, OMISSIONS, CHANGE OF PRICE, RENTAL OR OTHER CONDITIONS, WITHDRAWAL WITHOUT NOTICE, AND TO ANY SPECIAL LISTING CONDITIONS IMPOSED BY THE PROPERTY OWNER(S). ANY PROJECTIONS, OPINIONS OR ESTIMATES ARE SUBJECT TO UNCERTAINTY AND DO NOT SIGNIFY CURRENT OR FUTURE PROPERTY PERFORMANCE.

FOR LEASE

5120 ROBLIN BOULEVARD

CUSHMAN & WAKEFIELD
Winnipeg

Stevenson



Over 100,000 people live within a 3 kilometer radius

FOR LEASE

5120 ROBLIN BOULEVARD



Independently Owned and Operated / A Member of the Cushman & Wakefield Alliance ©2022 Cushman & Wakefield. All rights reserved. The information contained in this communication is strictly confidential. This information has been obtained from sources believed to be reliable but has not been verified. NO WARRANTY OR REPRESENTATION, EXPRESS OR IMPLIED, IS MADE AS TO THE CONDITION OF THE PROPERTY (OR PROPERTIES) REFERENCED HEREIN OR AS TO THE ACCURACY OR COMPLETENESS OF THE INFORMATION CONTAINED HEREIN, AND SAME IS SUBMITTED SUBJECT TO ERRORS, OMISSIONS, CHANGE OF PRICE, RENTAL OR OTHER CONDITIONS, WITHDRAWAL WITHOUT NOTICE, AND TO ANY SPECIAL LISTING CONDITIONS IMPOSED BY THE PROPERTY OWNER(S). ANY PROJECTIONS, OPINIONS OR ESTIMATES ARE SUBJECT TO UNCERTAINTY AND DO NOT SIGNIFY CURRENT OR FUTURE PROPERTY PERFORMANCE.

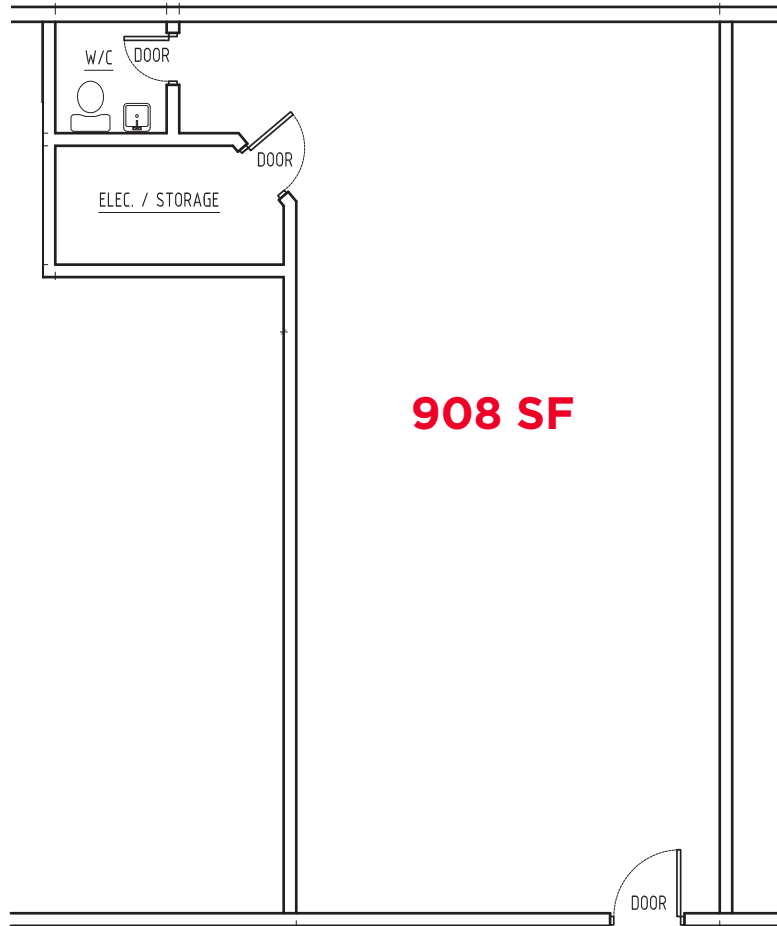
FOR LEASE

5120 ROBLIN BOULEVARD

CUSHMAN &
WAKEFIELD
Winnipeg

Stevenson

FLOOR PLAN - UNIT D



Independently Owned and Operated / A Member of the Cushman & Wakefield Alliance ©2022 Cushman & Wakefield. All rights reserved. The information contained in this communication is strictly confidential.

This information has been obtained from sources believed to be reliable but has not been verified.

NO WARRANTY OR REPRESENTATION, EXPRESS OR IMPLIED, IS MADE AS TO THE CONDITION OF THE PROPERTY (OR PROPERTIES) REFERENCED HEREIN OR AS TO THE ACCURACY OR COMPLETENESS OF THE INFORMATION CONTAINED HEREIN, AND SAME IS SUBMITTED SUBJECT TO ERRORS, OMISSIONS, CHANGE OF PRICE, RENTAL OR OTHER CONDITIONS, WITHDRAWAL WITHOUT NOTICE, AND TO ANY SPECIAL LISTING CONDITIONS IMPOSED BY THE PROPERTY OWNER(S). ANY PROJECTIONS, OPINIONS OR ESTIMATES ARE SUBJECT TO UNCERTAINTY AND DO NOT SIGNIFY CURRENT OR FUTURE PROPERTY PERFORMANCE.



Ryan Munt

Senior Vice President

Ryan Munt Personal Real Estate Corporation

T 204 928 5015

C 204 298 1905

ryan.munt@cwstevenson.ca

Shae Halpin

Associate

T 204 560 2536

C 204 558 6071

shae.halpin@cwstevenson.ca

