

HIGH VISIBILITY SHOWROOM SPACE WITH
EXCELLENT PARKING

645 CENTURY STREET



Brett Intrater
Executive Vice President

Brett Intrater Personal Real Estate Corporation
T 204 934 6229
C 204 999 1238
brett.intrater@cwstevenson.ca

Ryan Munt
Executive Vice President

Ryan Munt Personal Real Estate Corporation
T 204 928 5015
C 204 298 1905
ryan.munt@cwstevenson.ca





PROPERTY HIGHLIGHTS

(+/-) 11,037 SF AVAILABLE

- High exposure showroom space
- Excellent parking with over 84 stalls on site (2.9 stalls per 1,000 sf)
- 2 dock loading doors
- Nicely finished with sufficient washrooms and kitchenette/lunchroom
- Well-lit warehouse space with many windows allowing natural light throughout
- In close proximity to JAR International Airport
- Services Polo Park retail node
- Zoning: C2

LEASE RATE: \$14.00 PSF

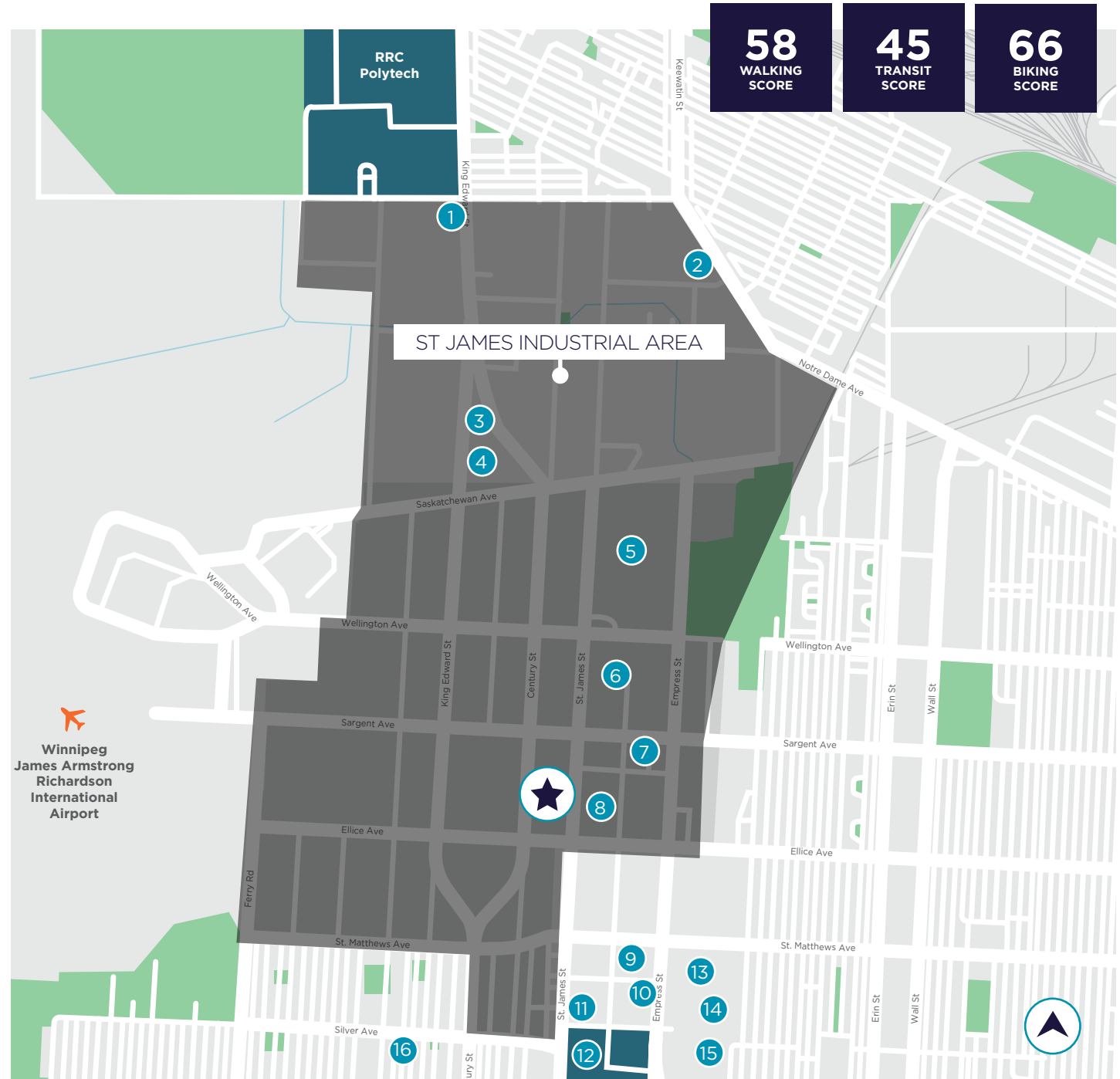
CAM & TAX: \$6.50 PSF

**PLUS A MANAGEMENT FEE OF 5% OF GROSS RENT*

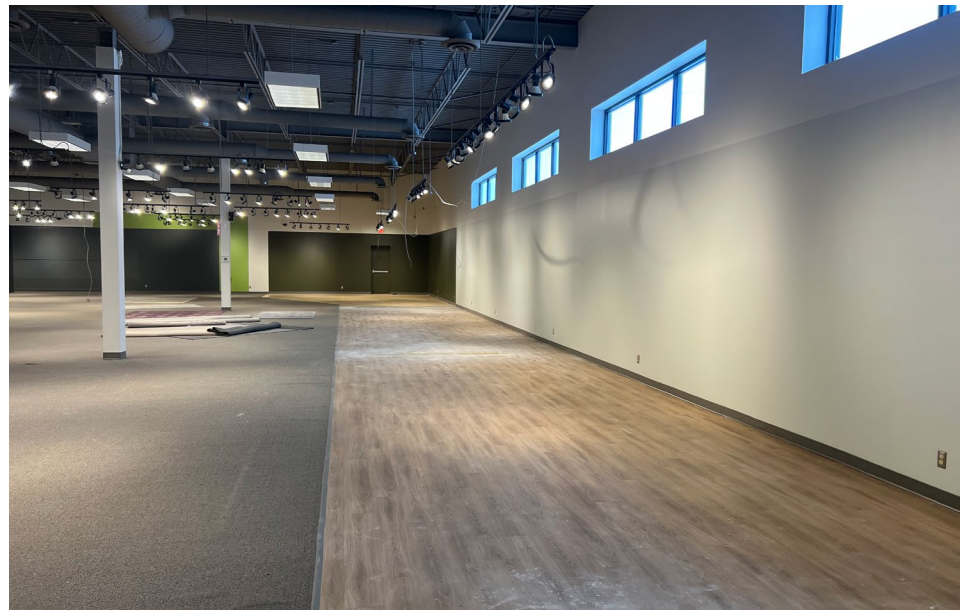
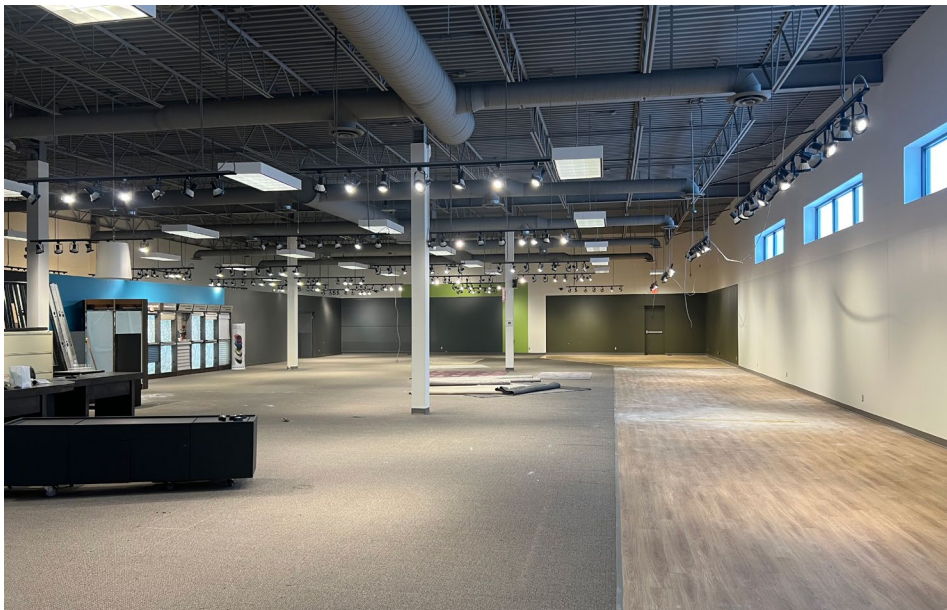


AMENITIES MAP

- 1 A&W
- 2 TIM HORTONS
- 3 WENDY'S
- 4 TIM HORTONS
- 5 COSTCO
- 6 SUPERSTORE
- 7 WALMART
- 8 STAPLES
- 9 WINNERS
- 10 PF CHANGS
- 11 CINEPLEX
- 12 POLO PARK SHOPPING CENTRE
- 13 HOME DEPOT
- 14 BURGER KING
- 15 CHAPTERS
- 16 CANADIAN TIRE



PROPERTY PHOTOS





CONTACT

Brett Intrater

Executive Vice President

Brett Intrater Personal Real Estate Corporation

T 204 934 6229

C 204 999 1238

brett.intrater@cwstevenson.ca

Ryan Munt

Executive Vice President

Ryan Munt Personal Real Estate Corporation

T 204 928 5015

C 204 298 1905

ryan.munt@cwstevenson.ca



**CUSHMAN &
WAKEFIELD**
Winnipeg



Stevenson

Independently Owned and Operated / A Member of the Cushman & Wakefield Alliance ©2025 Cushman & Wakefield. All rights reserved. The information contained in this communication is strictly confidential. This information has been obtained from sources believed to be reliable but has not been verified. NO WARRANTY OR REPRESENTATION, EXPRESS OR IMPLIED, IS MADE AS TO THE CONDITION OF THE PROPERTY (OR PROPERTIES) REFERENCED HEREIN OR AS TO THE ACCURACY OR COMPLETENESS OF THE INFORMATION CONTAINED HEREIN, AND SAME IS SUBMITTED SUBJECT TO ERRORS, OMISSIONS, CHANGE OF PRICE, RENTAL OR OTHER CONDITIONS, WITHDRAWAL WITHOUT NOTICE, AND TO ANY SPECIAL LISTING CONDITIONS IMPOSED BY THE PROPERTY OWNER(S). ANY PROJECTIONS, OPINIONS OR ESTIMATES ARE SUBJECT TO UNCERTAINTY AND DO NOT SIGNIFY CURRENT OR FUTURE PROPERTY PERFORMANCE.

645 CENTURY STREET | CWS