

**FOR LEASE**

# Units 6 & 7 353 Provencher Blvd

High Traffic Office/Retail Opportunity

**Stephen Sherlock**  
**Vice President**

T 204 928 5011

C 204 799 5526

steve.sherlock@cwstevenson.ca

**Cushman & Wakefield | Stevenson**

200 - 55 Donald Street

Winnipeg, Manitoba R3C 1L8

T 204 928 5000

[www.cwstevenson.ca](http://www.cwstevenson.ca)



UNITS 6 & 7 AVAILABLE  
CUSHMAN & WAKEFIELD | Stevenson  
**FOR LEASE**  
204 928 5000  
www.cwstevenson.ca

 **CUSHMAN & WAKEFIELD**  
Winnipeg

 **Stevenson**

FOR LEASE UNITS 6 & 7

# 353 Provencher Boulevard



(+/-) 843 sf & 1,520 sf Available

## PROPERTY HIGHLIGHTS

- Excellent high exposure location on Provencher Boulevard in the heart of St. Boniface
- Pylon signage opportunities
- (+/-) 27,400 cars pass by per day (City of Winnipeg)
- Zoned: C2

UNIT	SQ FT (+/-)	LEASE RATE	CAM & TAX	AVAILABILITY
6	843	\$14.95	\$11.44 (2024 EST.)	IMMEDIATELY
7	1,520	\$14.95	\$11.44 (2024 EST.)	IMMEDIATELY

**FOR LEASE**

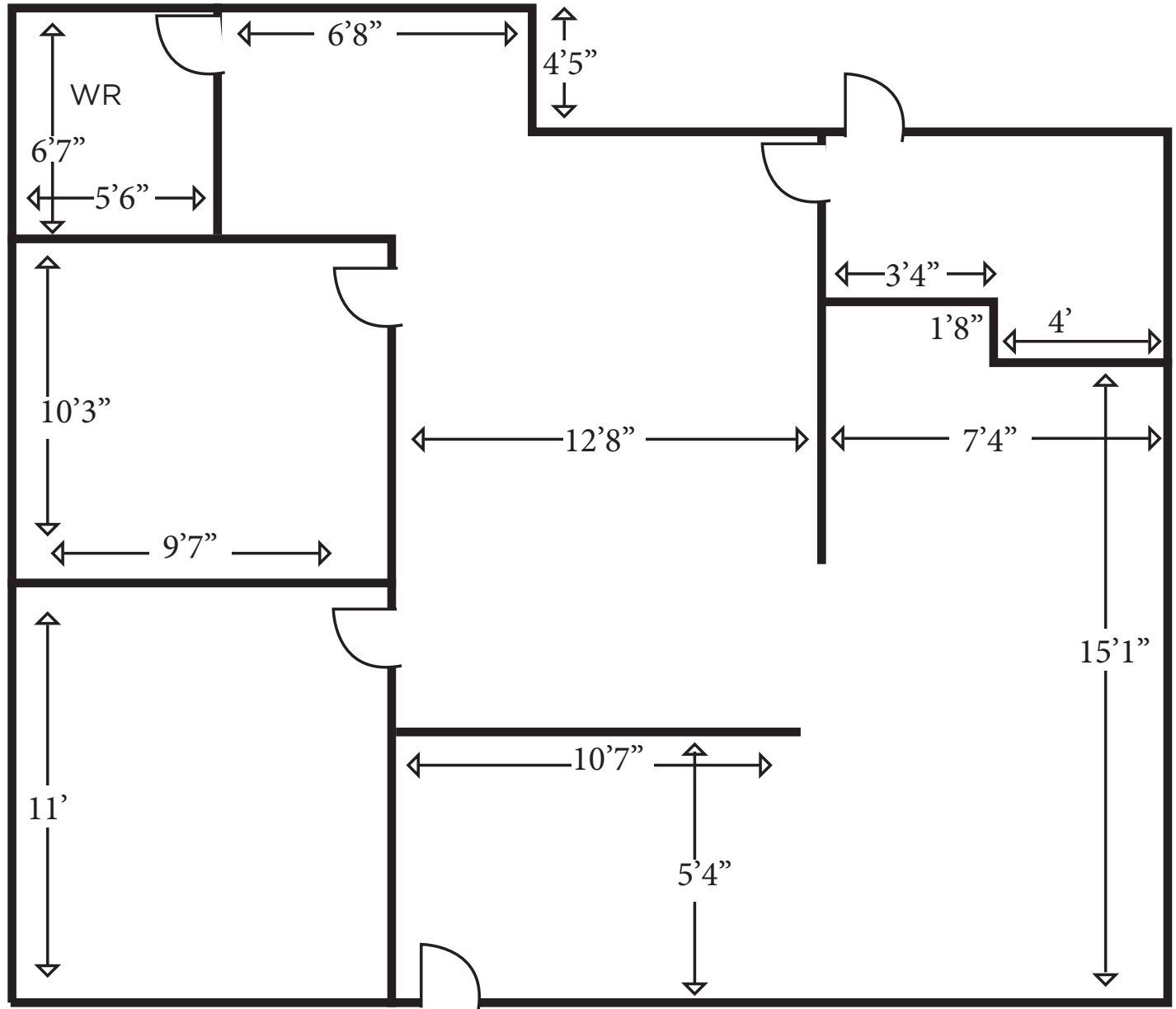
**Unit 6 - 353 Provencher Blvd**



Independently Owned and Operated / A Member of the Cushman & Wakefield Alliance ©2022 Cushman & Wakefield. All rights reserved. The information contained in this communication is strictly confidential. This information has been obtained from sources believed to be reliable but has not been verified. NO WARRANTY OR REPRESENTATION, EXPRESS OR IMPLIED, IS MADE AS TO THE CONDITION OF THE PROPERTY (OR PROPERTIES) REFERENCED HEREIN OR AS TO THE ACCURACY OR COMPLETENESS OF THE INFORMATION CONTAINED HEREIN, AND SAME IS SUBMITTED SUBJECT TO ERRORS, OMISSIONS, CHANGE OF PRICE, RENTAL OR OTHER CONDITIONS, WITHDRAWAL WITHOUT NOTICE, AND TO ANY SPECIAL LISTING CONDITIONS IMPOSED BY THE PROPERTY OWNER(S). ANY PROJECTIONS, OPINIONS OR ESTIMATES ARE SUBJECT TO UNCERTAINTY AND DO NOT SIGNIFY CURRENT OR FUTURE PROPERTY PERFORMANCE.

**FOR LEASE**

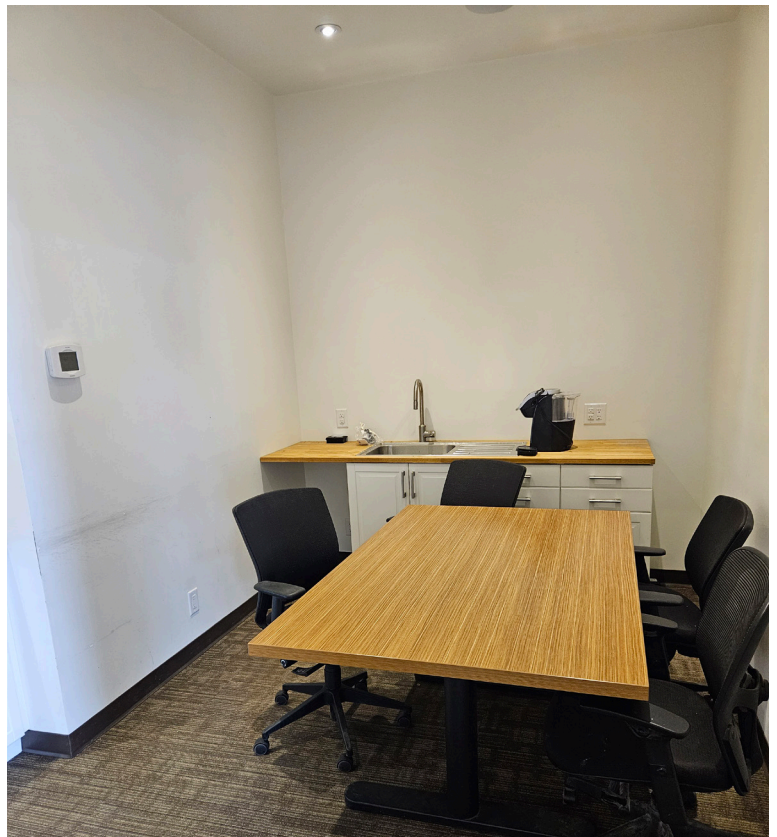
# Unit 6 - 353 Provencher Blvd



*\*please note floorplan is not to scale*

**FOR LEASE**

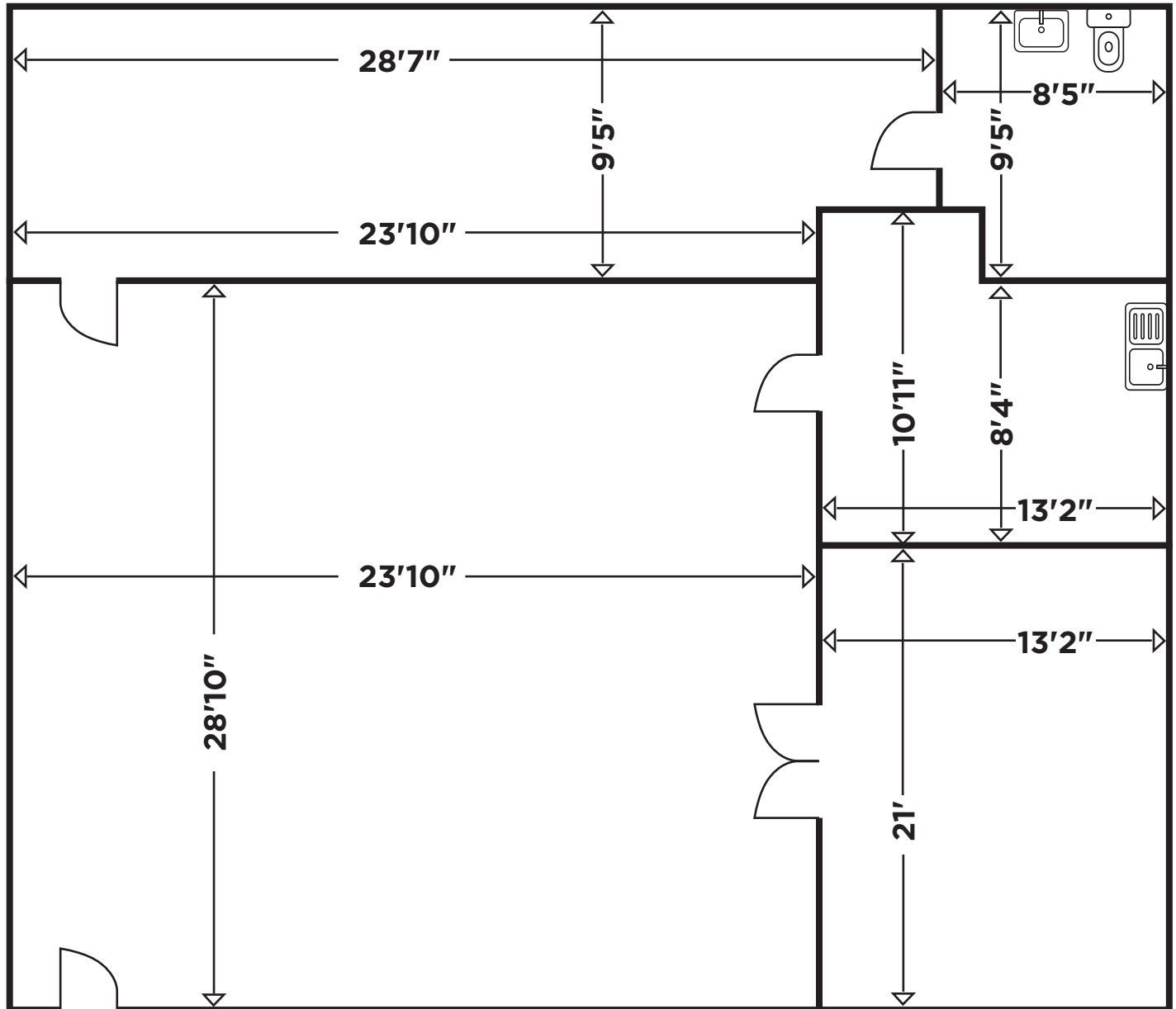
**Unit 7 - 353 Provencher Blvd**



Independently Owned and Operated / A Member of the Cushman & Wakefield Alliance ©2022 Cushman & Wakefield. All rights reserved. The information contained in this communication is strictly confidential. This information has been obtained from sources believed to be reliable but has not been verified. NO WARRANTY OR REPRESENTATION, EXPRESS OR IMPLIED, IS MADE AS TO THE CONDITION OF THE PROPERTY (OR PROPERTIES) REFERENCED HEREIN OR AS TO THE ACCURACY OR COMPLETENESS OF THE INFORMATION CONTAINED HEREIN, AND SAME IS SUBMITTED SUBJECT TO ERRORS, OMISSIONS, CHANGE OF PRICE, RENTAL OR OTHER CONDITIONS, WITHDRAWAL WITHOUT NOTICE, AND TO ANY SPECIAL LISTING CONDITIONS IMPOSED BY THE PROPERTY OWNER(S). ANY PROJECTIONS, OPINIONS OR ESTIMATES ARE SUBJECT TO UNCERTAINTY AND DO NOT SIGNIFY CURRENT OR FUTURE PROPERTY PERFORMANCE.

**FOR LEASE**

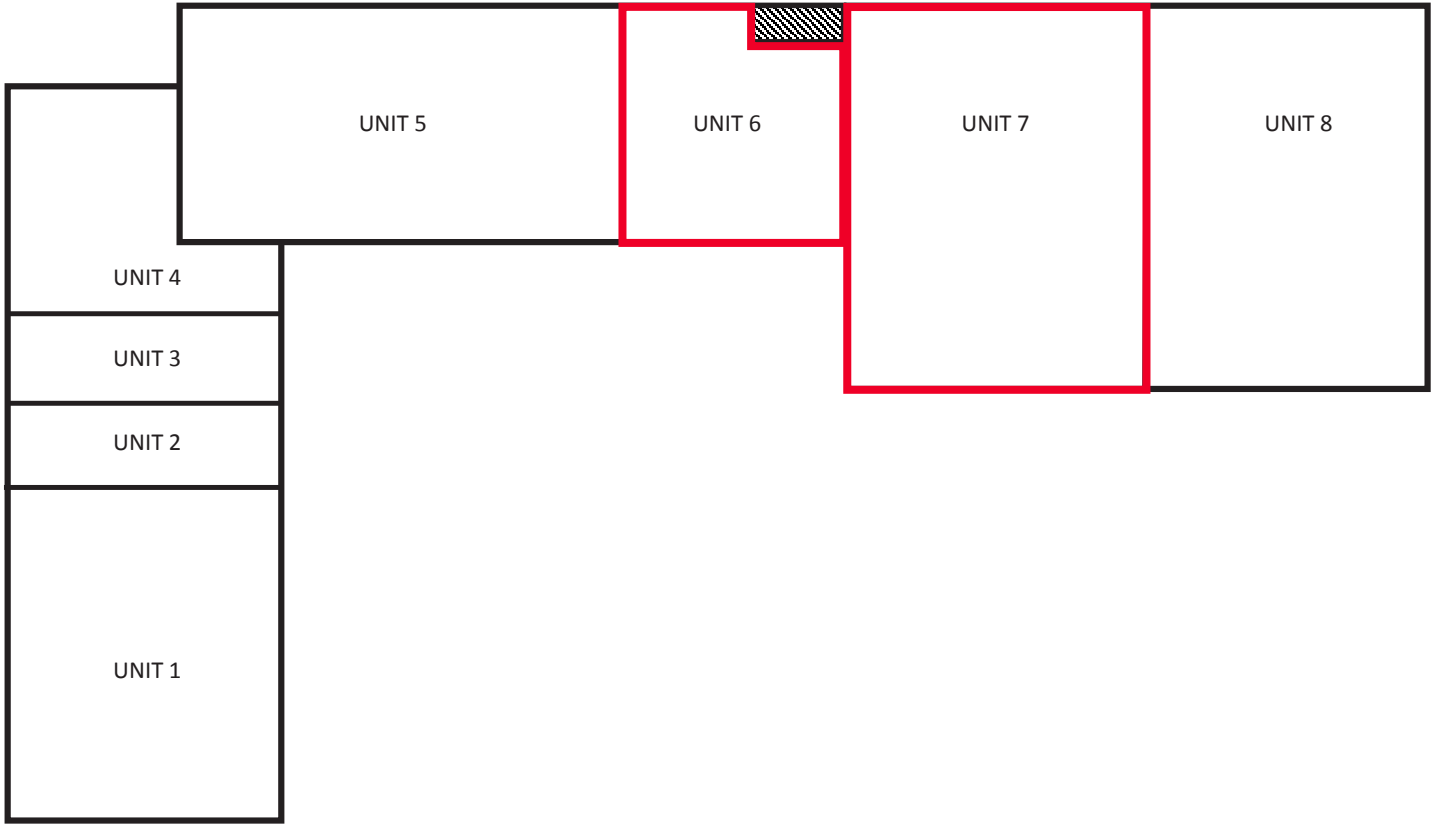
**Unit 7 - 353 Provencher Blvd**



*\*please note floorplan is not to scale*

**FOR LEASE**

**Units 6 & 7 - 353 Provencher Blvd**



**PROVENCHER BOULEVARD**

**Stephen Sherlock**  
**Vice President**

T 204 928 5011

C 204 799 5526

steve.sherlock@cwstevenson.ca

**Cushman & Wakefield | Stevenson**

200 - 55 Donald Street

Winnipeg, Manitoba R3C 1L8

T 204 928 5000

[www.cwstevenson.ca](http://www.cwstevenson.ca)

Independently Owned and Operated / A Member of the Cushman & Wakefield Alliance ©2022 Cushman & Wakefield. All rights reserved.  
The information contained in this communication is strictly confidential.

This information has been obtained from sources believed to be reliable but has not been verified. NO WARRANTY OR REPRESENTATION, EXPRESS OR IMPLIED, IS MADE AS TO THE CONDITION OF THE PROPERTY (OR PROPERTIES) REFERENCED HEREIN OR AS TO THE ACCURACY OR COMPLETENESS OF THE INFORMATION CONTAINED HEREIN, AND SAME IS SUBMITTED SUBJECT TO ERRORS, OMISSIONS, CHANGE OF PRICE, RENTAL OR OTHER CONDITIONS, WITHDRAWAL WITHOUT NOTICE, AND TO ANY SPECIAL LISTING CONDITIONS IMPOSED BY THE PROPERTY OWNER(S). ANY PROJECTIONS, OPINIONS OR ESTIMATES ARE SUBJECT TO UNCERTAINTY AND DO NOT SIGNIFY CURRENT OR FUTURE PROPERTY PERFORMANCE.

