

BAYS STARTING AT 2,500 SF | AVAILABLE FALL 2024



INDUSTRIAL FLEX SPACE FOR LEASE 3000 MCCREARY ROAD

STEPHEN SHERLOCK
Vice President

T 204 928 5000
C 204 799 5526
E steve.sherlock@cwstevenson.ca

RYAN MUNT
Executive Vice President
Ryan Munt Personal Real Estate Corporation

T 204 928 5015
C 204 298 1905
E ryan.munt@cwstevenson.ca





PROPERTY HIGHLIGHTS

PHASE I (+/-) 49,000 SF AVAILABLE

- Brand new flex space now under construction
- Great exposure just north of the controlled intersection of McGillivray Boulevard and McCreary Road
- Just outside of city of Winnipeg limits in the RM of McDonald
- No City of Winnipeg business taxes
- High quality pre-cast construction with 20' clear ceiling height
- All loading door openings are 10' x 14' to allow for grade level loading, dock level loading or windows
- Two 11,500 sf clearspan sections and two 13,000 sf clearspan sections with bay sizes starting at 2,500 sf
- Ready for occupancy fall 2024

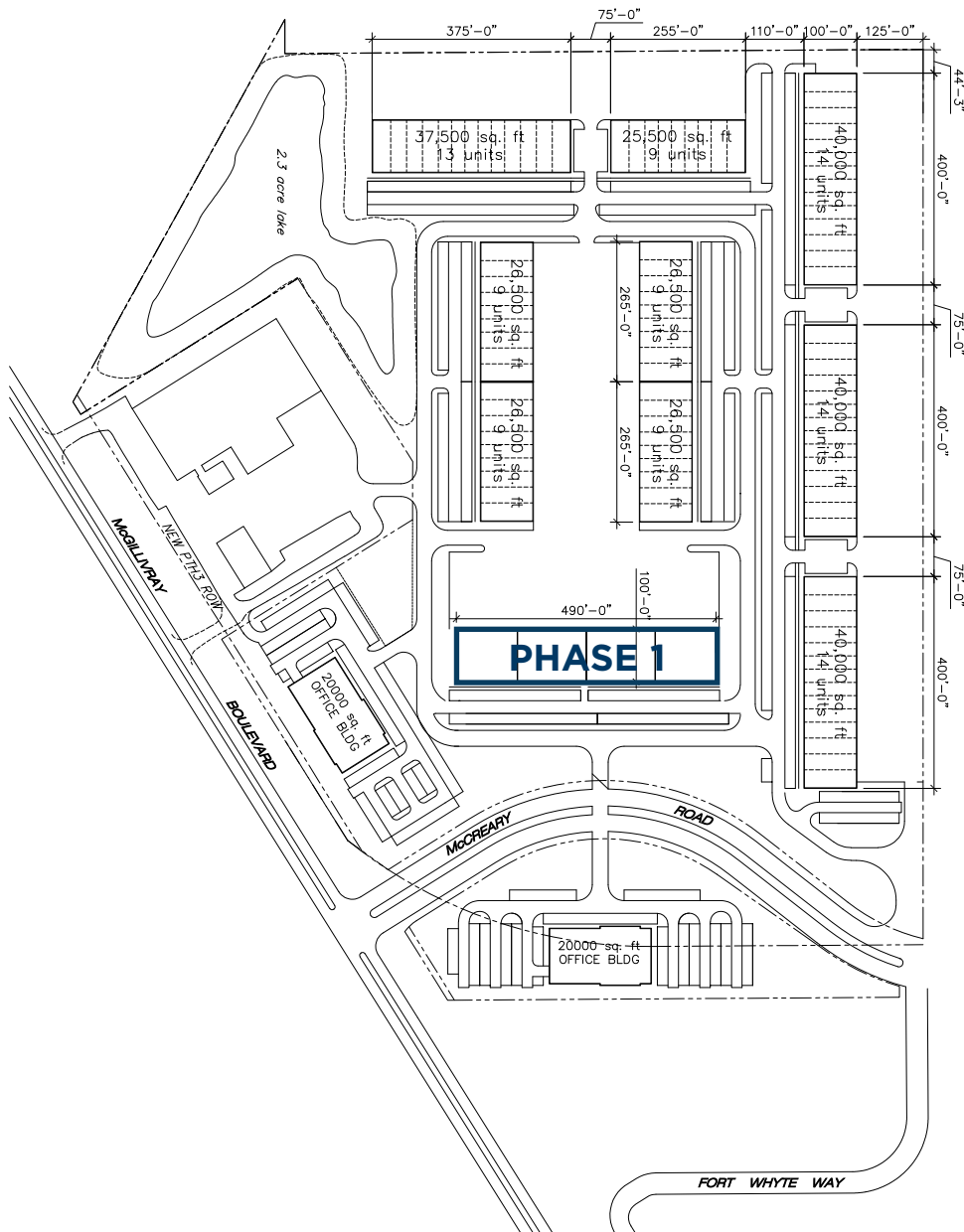
LEASE RATE: TBD

CAM & TAX: \$4.75 PSF (2024 EST)

**PLUS A 5% MANAGEMENT FEE BASED ON GROSS RENT*



FUTURE DEVELOPMENT



BASE BUILDING SPECIFICATIONS

Walls & Flooring

- Insulated to R20
- Smooth trowelled concrete floor slab designed to support a distributed surcharge load of 1,500 lbs. per sq. ft.

Roof

- Insulated to R30

HVAC

- Rooftop HVAC unit to heat / cool 50% of space and gas fired unit heater per bay

Electrical Panel

- A power supply will be brought to the premises up to and including an empty distribution panel
- 3 Phase 347/600 Volt, 800 Amp main with 70 Amp 347/600 Volt, 3 Phase 4 Wire electrical service per bay

Data

- An empty conduit will be provided

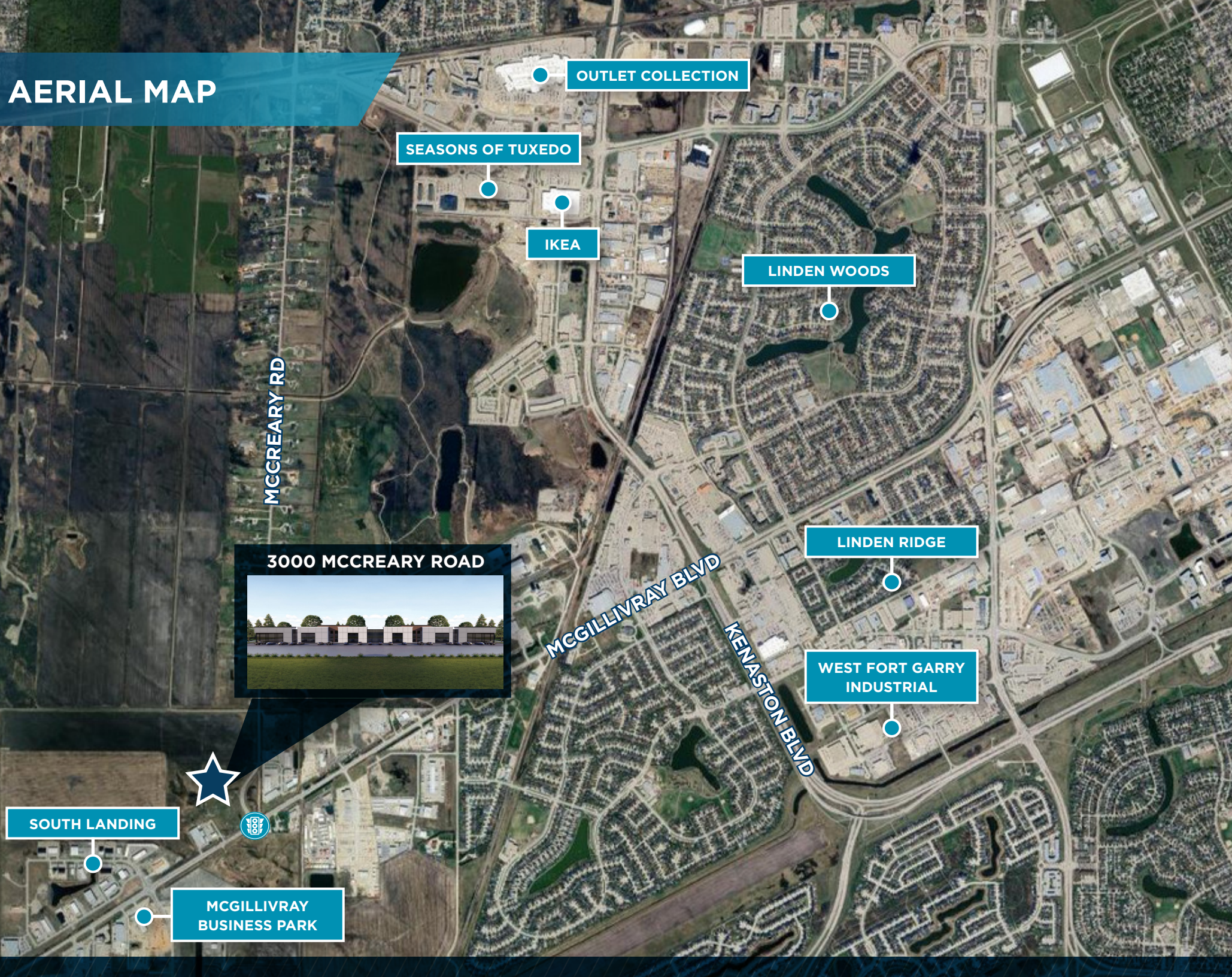
Plumbing

- Domestic water supply and capped drain line provided for each bay

Lighting

- Up to 50% LED warehouse lighting shall be provided

AERIAL MAP



OUTLET COLLECTION

SEASONS OF TUXEDO

IKEA

LINDEN WOODS

LINDEN RIDGE

WEST FORT GARRY INDUSTRIAL

3000 MCCREARY ROAD

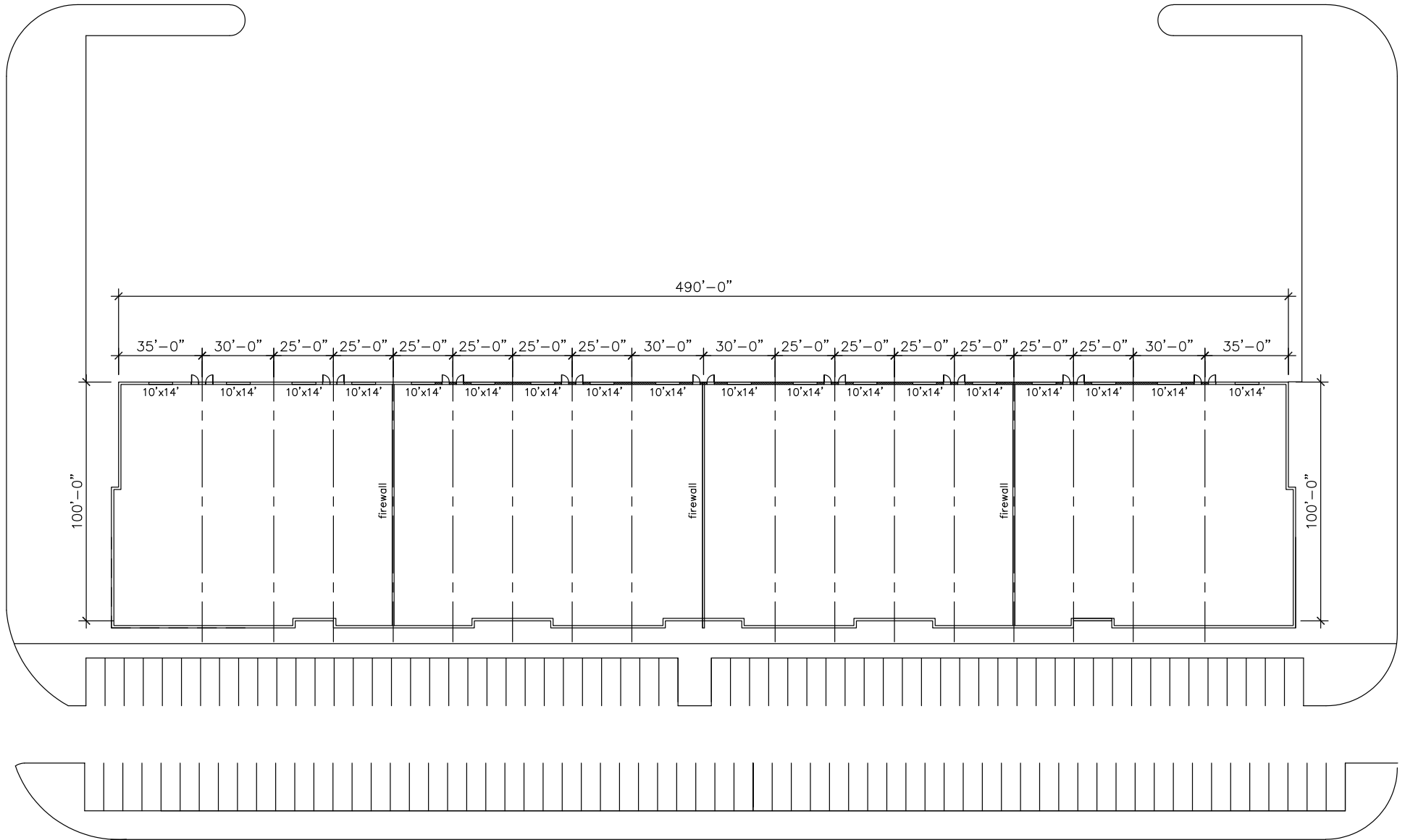


SOUTH LANDING

MCGILLIVRAY BUSINESS PARK



FLOOR PLAN



AVAILABLE FALL 2024 | NOW PRE-LEASING



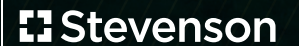
CONTACT

STEPHEN SHERLOCK
Vice President

T 204 928 5000
C 204 799 5526
E steve.sherlock@cwstevenson.ca

RYAN MUNT
Executive Vice President
Ryan Munt Personal Real Estate Corporation

T 204 928 5015
C 204 298 1905
E ryan.munt@cwstevenson.ca



Independently Owned and Operated / A Member of the Cushman & Wakefield Alliance ©2024 Cushman & Wakefield. All rights reserved. The information contained in this communication is strictly confidential. This information has been obtained from sources believed to be reliable but has not been verified. NO WARRANTY OR REPRESENTATION, EXPRESS OR IMPLIED, IS MADE AS TO THE CONDITION OF THE PROPERTY (OR PROPERTIES) REFERENCED HEREIN OR AS TO THE ACCURACY OR COMPLETENESS OF THE INFORMATION CONTAINED HEREIN, AND SAME IS SUBMITTED SUBJECT TO ERRORS, OMISSIONS, CHANGE OF PRICE, RENTAL OR OTHER CONDITIONS, WITHDRAWAL WITHOUT NOTICE, AND TO ANY SPECIAL LISTING CONDITIONS IMPOSED BY THE PROPERTY OWNER(S). ANY PROJECTIONS, OPINIONS OR ESTIMATES ARE SUBJECT TO UNCERTAINTY AND DO NOT SIGNIFY CURRENT OR FUTURE PROPERTY PERFORMANCE.