



MULTI-FAMILY FOR SALE
27 SOUTHSORE DRIVE*
ST. LAURENT, MANITOBA

JAMES TOKER
Associate

T 204 934 6210
C 204 914 8423
E james.toker@cwstevenson.ca

BRANDI ELOQUENCE
Associate

T 204 934 6246
C 204 996 3425
E brandi.eloquence@cwstevenson.ca

***FOUND AS 27 S SHORE RD
ON GOOGLE MAPS**





PROPERTY HIGHLIGHTS

- Consistent rental income providing a stable ROI
- 100% leased to long-term tenants with the potential to convert to short-term rentals upon lease expiry
- Units strata titled for future individual sales
- Constructed in 2015 to the highest standards
- 6 units in three configurations all featuring two bedrooms, heated ceramic flooring, in-suite laundry and private patios
- 7' x 7' storage shed per unit
- Ample on-site parking
- Beach access approximately 200 feet away
- Potential to acquire adjacent land zoned for similar use

SALE PRICE: \$1,195,000

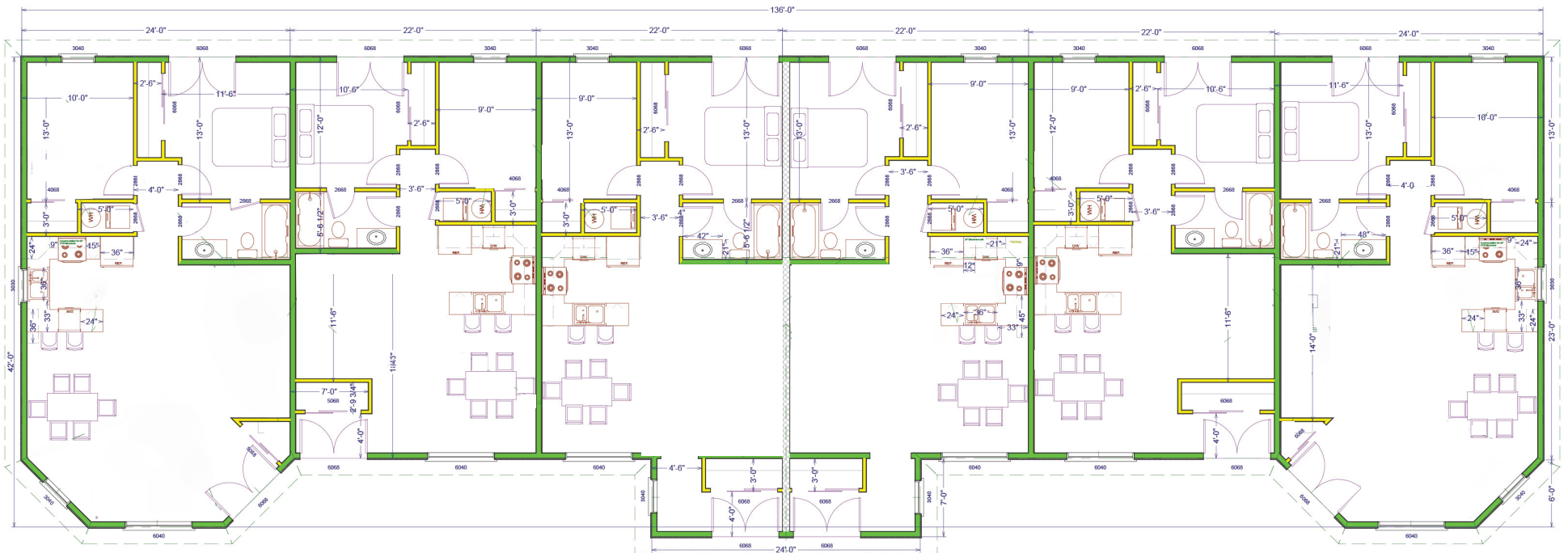
(+/-) 5,280 SF AVAILABLE



UNIT PHOTOS



FLOOR PLAN



*Finished square footage is made based on plan dimensions only and may vary from the finished square footage as built.

AREA OVERVIEW



LOCAL AMENITIES

- 1 DELTA BEACH
- 2 ST. AMBROISE PROVINCIAL PARK
- 3 TWIN LAKES BEACH
- 4 LAURENTIA BEACH
- 5 LUNDAR BEACH
- 6 LONG POINT
- 7 OAK POINT
- 8 SAINT LAURENT
- 9 LAKE FRANCIS
- 10 WOODLANDS
- 11 WARREN

DRIVE TIMES



WINNIPEG MANITOBA
1 HR 13 MINS
94.7 KM

PORTAGE LA PRAIRIE
1 HR 5 MINS
95.4 KM



CONTACT

JAMES TOKER
Associate

T 204 934 6210
C 204 914 8423
E james.toker@cwstevenson.ca

BRANDI ELOQUENCE
Associate

T 204 934 6246
C 204 996 3425
E brandi.eloquence@cwstevenson.ca



Independently Owned and Operated / A Member of the Cushman & Wakefield Alliance ©2023 Cushman & Wakefield. All rights reserved. The information contained in this communication is strictly confidential. This information has been obtained from sources believed to be reliable but has not been verified. NO WARRANTY OR REPRESENTATION, EXPRESS OR IMPLIED, IS MADE AS TO THE CONDITION OF THE PROPERTY (OR PROPERTIES) REFERENCED HEREIN OR AS TO THE ACCURACY OR COMPLETENESS OF THE INFORMATION CONTAINED HEREIN, AND SAME IS SUBMITTED SUBJECT TO ERRORS, OMISSIONS, CHANGE OF PRICE, RENTAL OR OTHER CONDITIONS, WITHDRAWAL WITHOUT NOTICE, AND TO ANY SPECIAL LISTING CONDITIONS IMPOSED BY THE PROPERTY OWNER(S). ANY PROJECTIONS, OPINIONS OR ESTIMATES ARE SUBJECT TO UNCERTAINTY AND DO NOT SIGNIFY CURRENT OR FUTURE PROPERTY PERFORMANCE.