

TURN-KEY COFFEE SHOP FOR LEASE



PRIME RETAIL OPPORTUNITY AT **533 COLONY STREET, UNIT 100B**

Chris Hourihan
Associate Vice President

T 204 934 6215
C 204 995 0225
chris.hourihan@cwstevenson.ca

Colin Gratton
Associate

T 204 928 5000
C 204 471 1270
colin.gratton@cwstevenson.ca



**CUSHMAN &
WAKEFIELD**
Winnipeg



Stevenson



PROPERTY HIGHLIGHTS

(+/-) 790 SF AVAILABLE

*PLUS PATIO SPACE

- Completely turn-key coffee shop opportunity complete with equipment
- Brand new architecturally significant commercial space boasts high-end fixtures and feel
- Located on a high-exposure corner of Broadway near the U of W, WAG, and the Legislative Building, located across the street from the Canada Life Head Office on the periphery of Downtown.
- In the heart of a growing high-density district with over 700 units of new multi-family housing

LEASE RATE

\$2,575 PER MONTH

PLUS GST & UTILITIES



AREA MAP



West Broadway Commons
110 Units



308 Colony
214 Units
*under construction



Downtown Commons
102 Units | \$31M



Sherbrook Flats
71 Units



Muse Flats
119 Units



WAG Inuit Art Centre
\$65M Investment



Urban Square
143 Units



216 Sherbrook
24 Units



545 Broadway
21 Units
*under construction



West Broadway Commons
110 Units



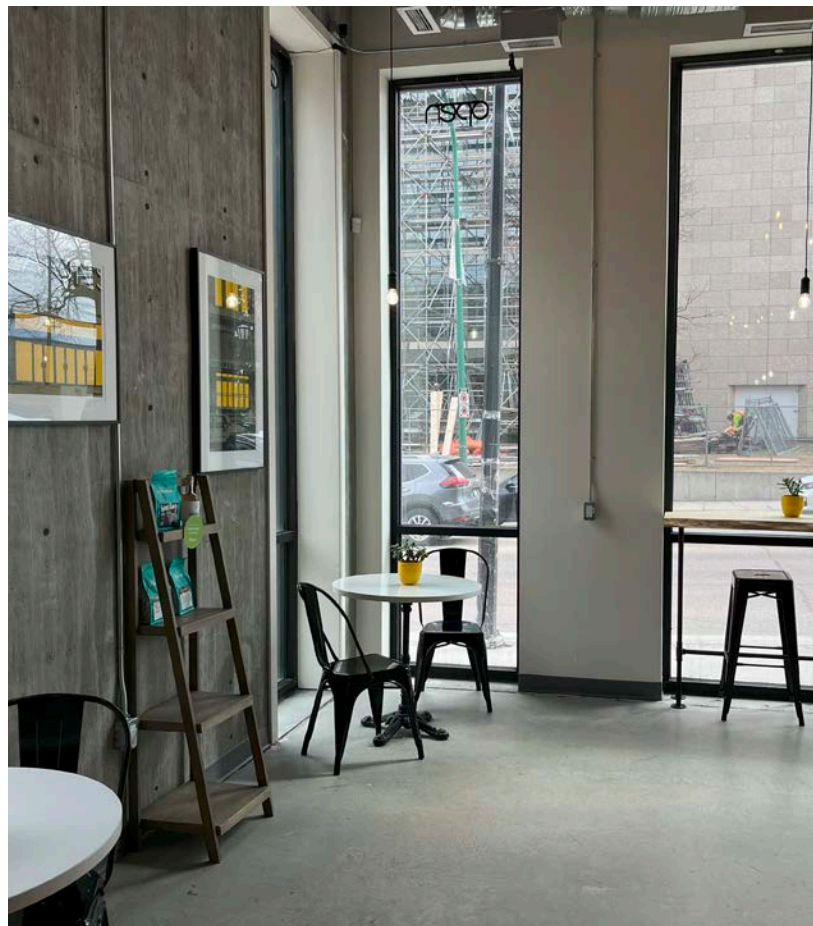
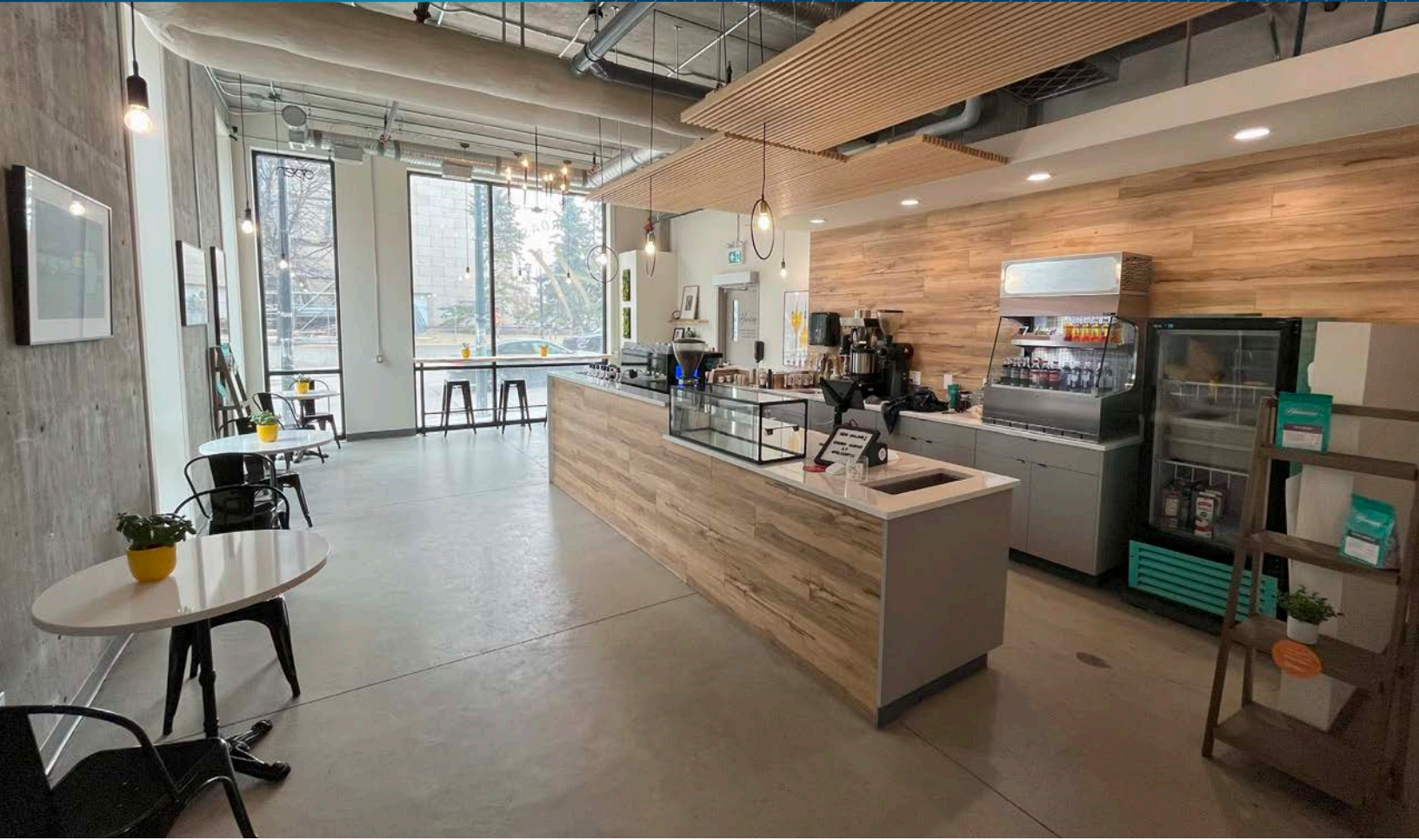
198 Sherbrook
28 Units



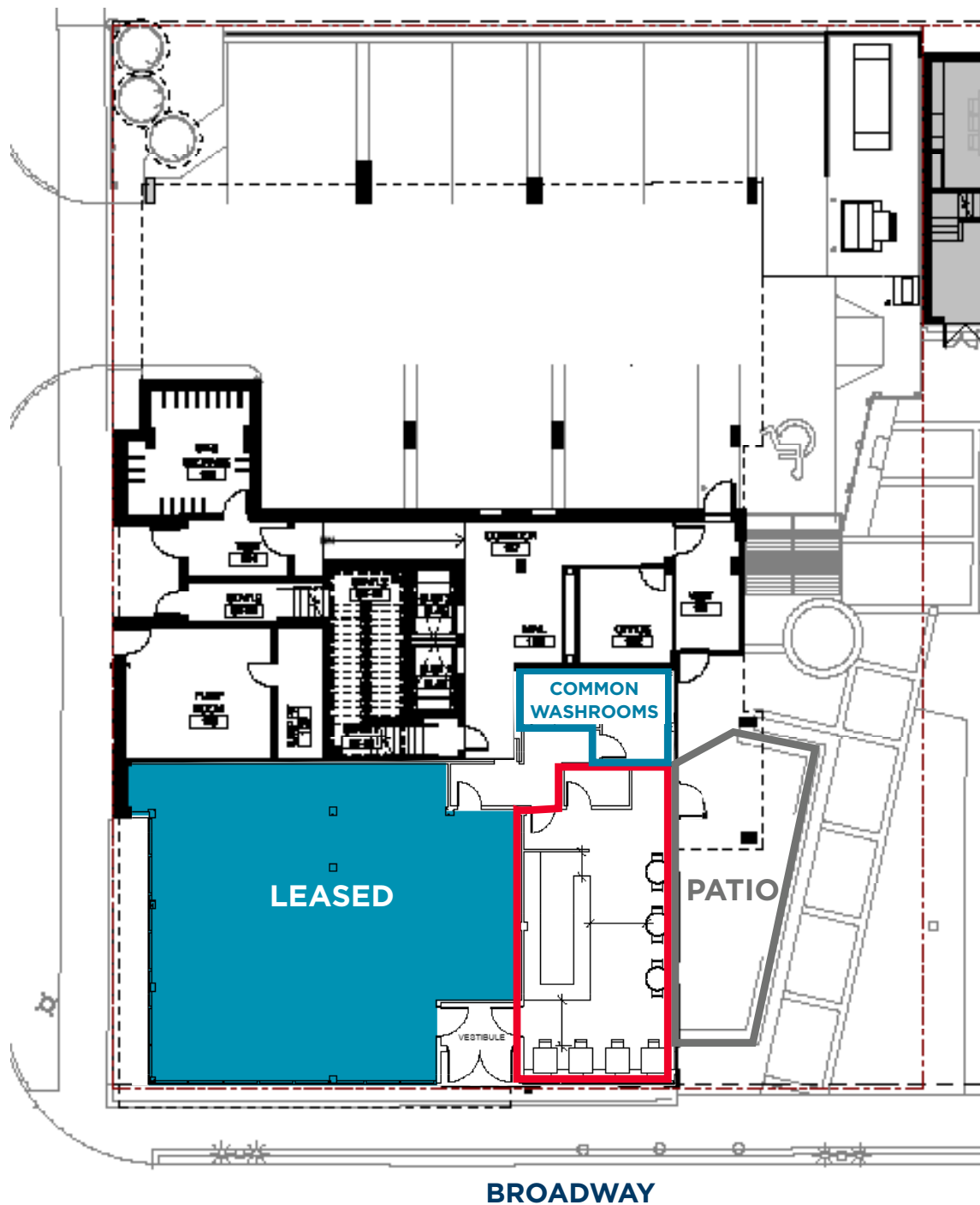
710 Westminster
44 Units



IMAGES



SITE PLAN



EQUIPMENT INCLUDED

- Elektra dual group espresso machine
- Undercounter Commercial dishwasher
- Undercounter 27" fridge
- Commercial Marco brewer and 2 pots
- Commercial Marco undercounter hot water tower
- Ipad, and POS system
- 3 marble tables
- 6 chairs, and 4 bar stools
- Countertop grab-and-go fridge
- All other equipment, inventory and personal property located at the premises





west broadway
COMMONS
167 COLONY

Harrisons
COFFEE CO.



CONTACT

Chris Hourihan
Associate Vice President

T 204 934 6215
C 204 995 0225
chris.hourihan@cwstevenson.ca

Colin Gratton
Associate

T 204 928 5000
C 204 471 1270
colin.gratton@cwstevenson.ca

Independently Owned and Operated / A Member of the Cushman & Wakefield Alliance ©2024 Cushman & Wakefield. All rights reserved. The information contained in this communication is strictly confidential.

This information has been obtained from sources believed to be reliable but has not been verified.

NO WARRANTY OR REPRESENTATION, EXPRESS OR IMPLIED, IS MADE AS TO THE CONDITION OF THE PROPERTY (OR PROPERTIES) REFERENCED HEREIN OR AS TO THE ACCURACY OR COMPLETENESS OF THE INFORMATION CONTAINED HEREIN, AND SAME IS SUBMITTED SUBJECT TO ERRORS, OMISSIONS, CHANGE OF PRICE, RENTAL OR OTHER CONDITIONS, WITHDRAWAL WITHOUT NOTICE, AND TO ANY SPECIAL LISTING CONDITIONS IMPOSED BY THE PROPERTY OWNER(S). ANY PROJECTIONS, OPINIONS OR ESTIMATES ARE SUBJECT TO UNCERTAINTY AND DO NOT SIGNIFY CURRENT OR FUTURE PROPERTY PERFORMANCE.