



FOR LEASE
UNIT 38 - 5 SCURFIELD BLVD

STEPHEN SHERLOCK
Vice President

T 204 928 5011
C 204 799 5526
E stephen.sherlock@cwstevenson.ca

RYAN MUNT
Executive Vice President
Ryan Munt Personal Real Estate Corporation

T 204 928 5015
C 204 298 1905
E ryan.munt@cwstevenson.ca





PROPERTY HIGHLIGHTS

(+/-) 7,020 SF AVAILABLE

- High traffic location on the corner of Scurfield Boulevard and Waverley Street in SW Winnipeg in close proximity to Route 90
- Amazing high exposure showroom/ office/ warehouse space
- Corner building sign opportunities, pylon sign on the corner of Scurfield and Waverly and additional dedicated monument signage on Scurfield
- 1 grade level loading door, ability to re-instate additional grade level loading door currently drywalled in from the inside of the unit
- (+/-) 18' clear ceiling height
- Zoned M1
- Available September 1, 2024

Lease Rate: \$21.95 PSF
CAM & Tax: \$8.35 PSF (2024 est.)

*Plus mgmt fee of 5% of gross rent



SCURFIELD BLVD

WAVERLEY ST

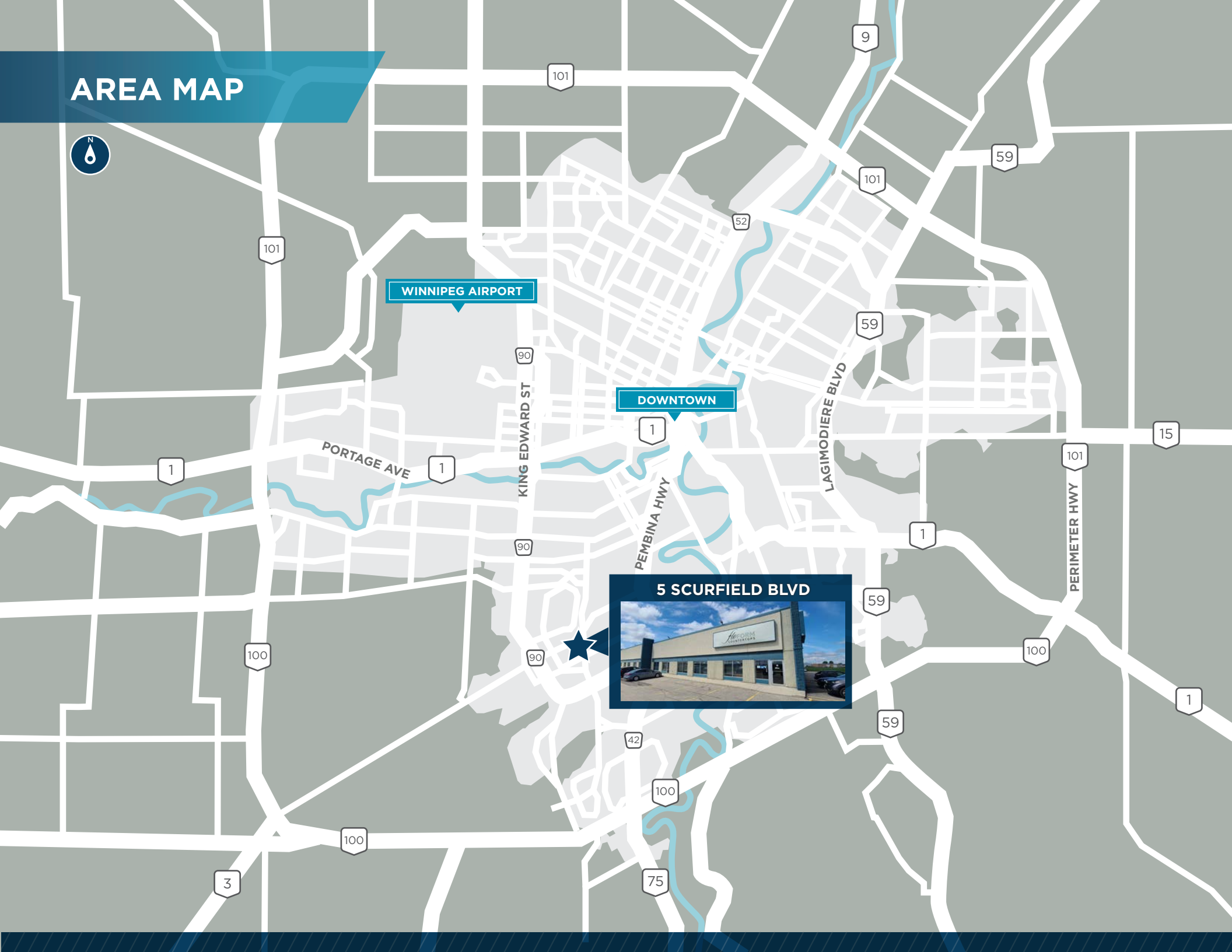
AREA MAP

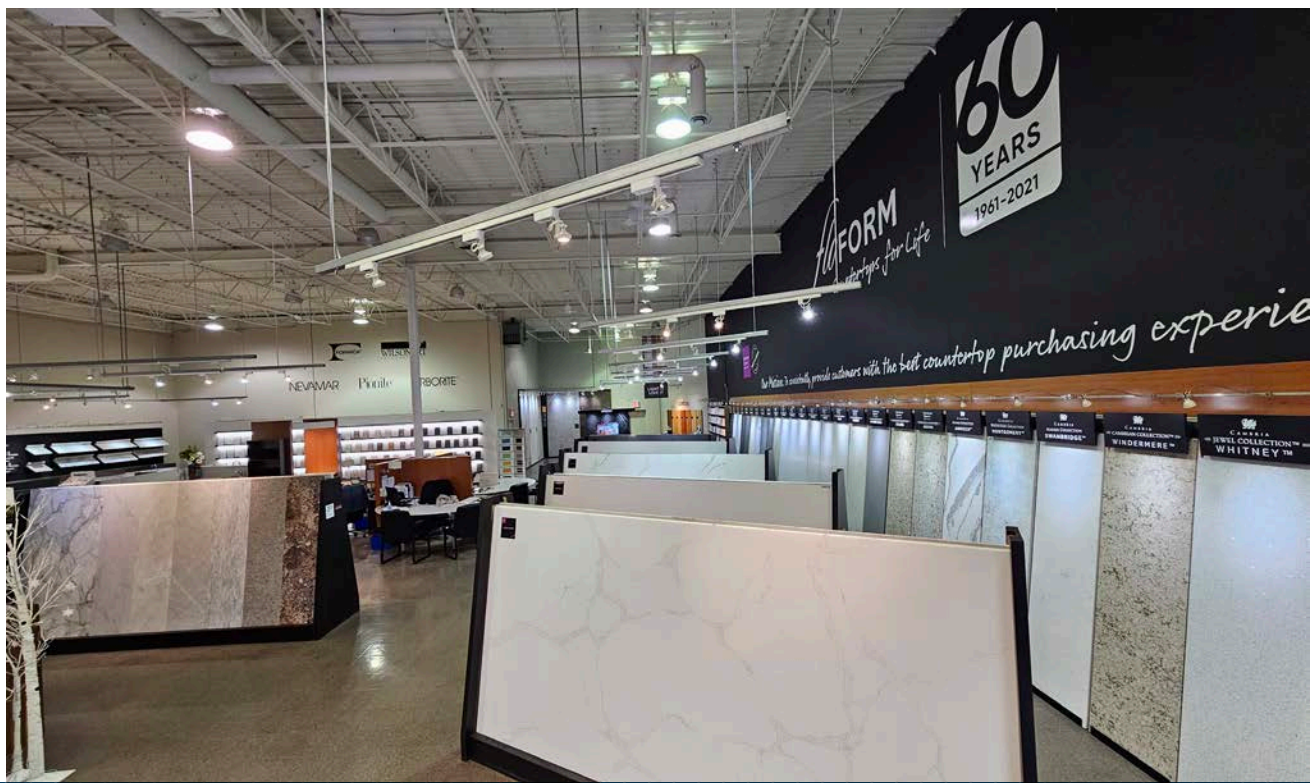
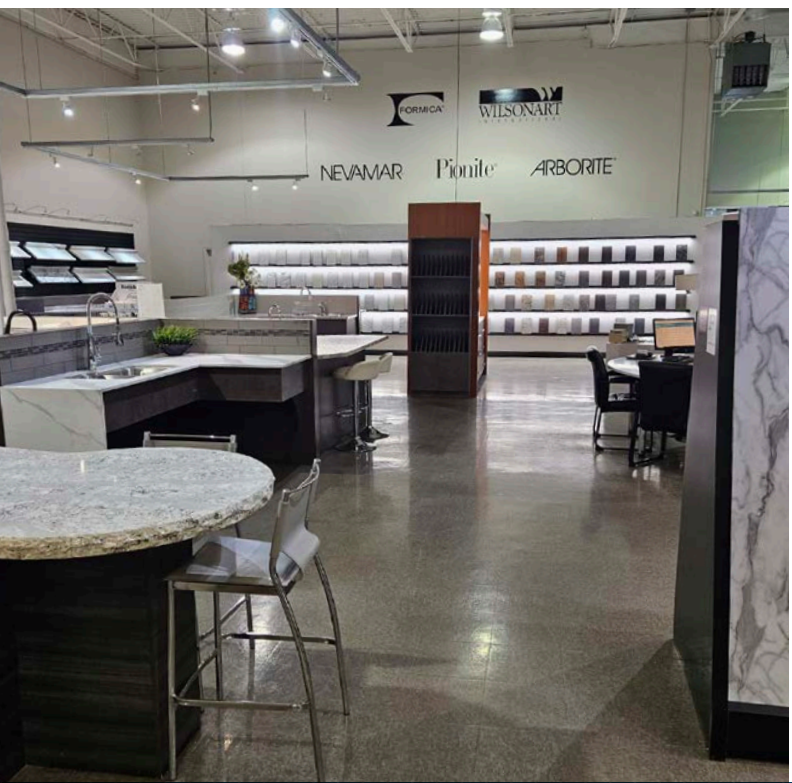
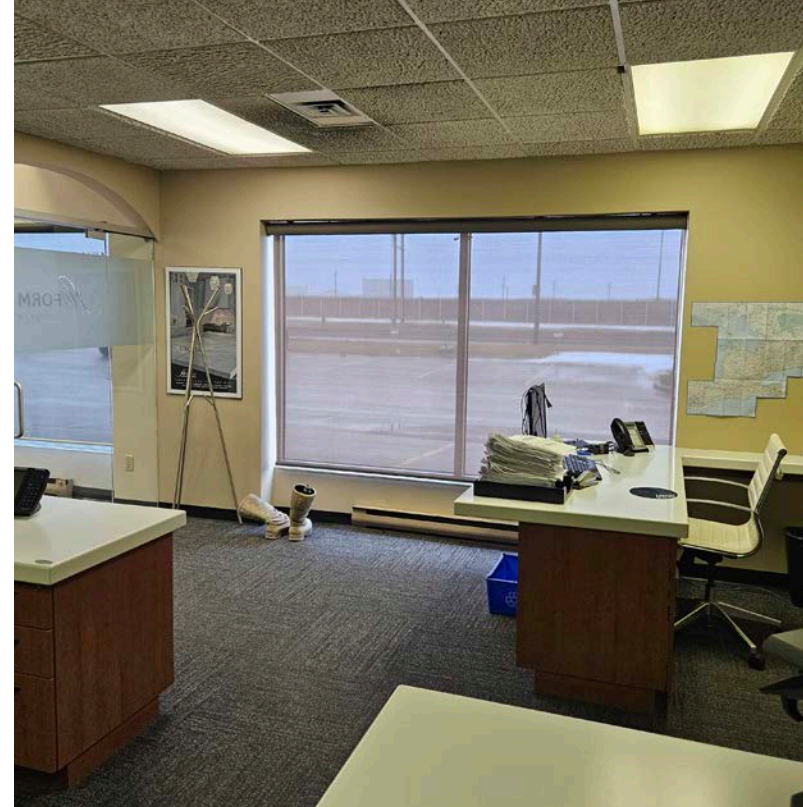


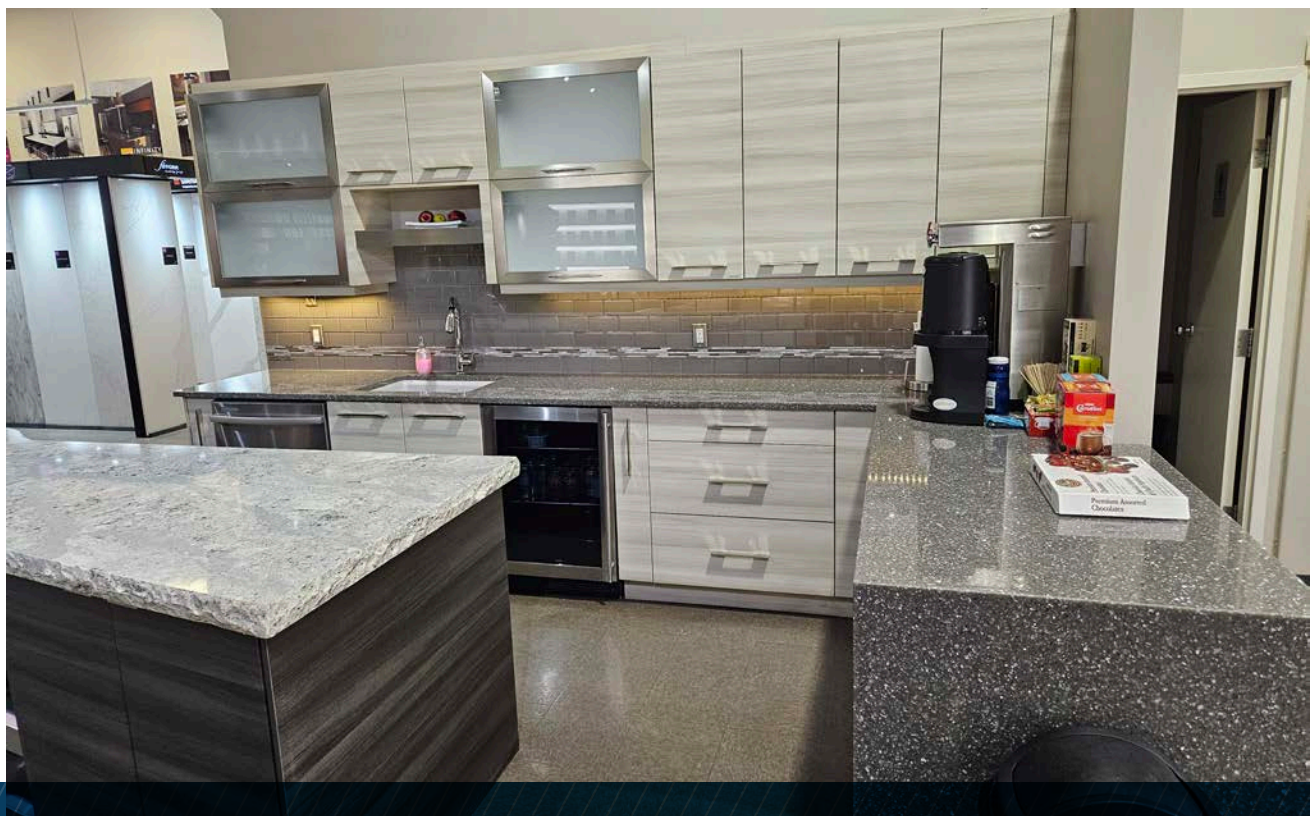
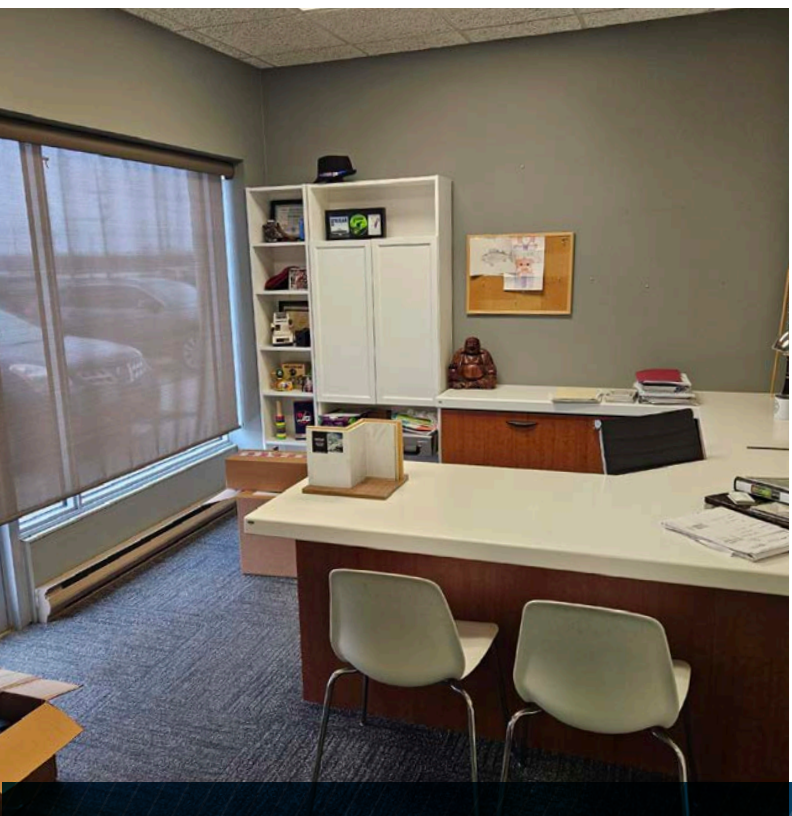
WINNIPEG AIRPORT

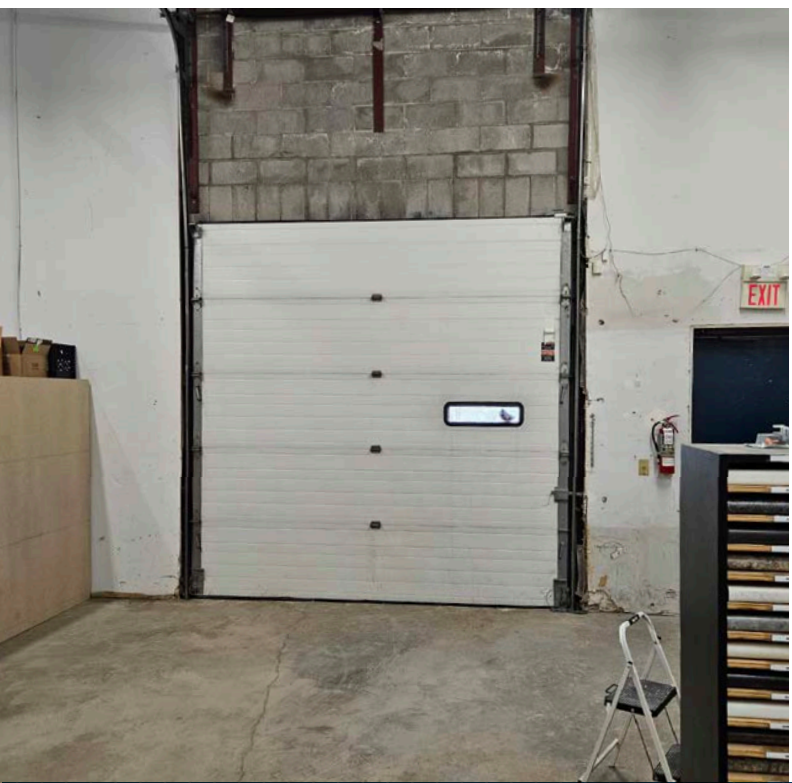
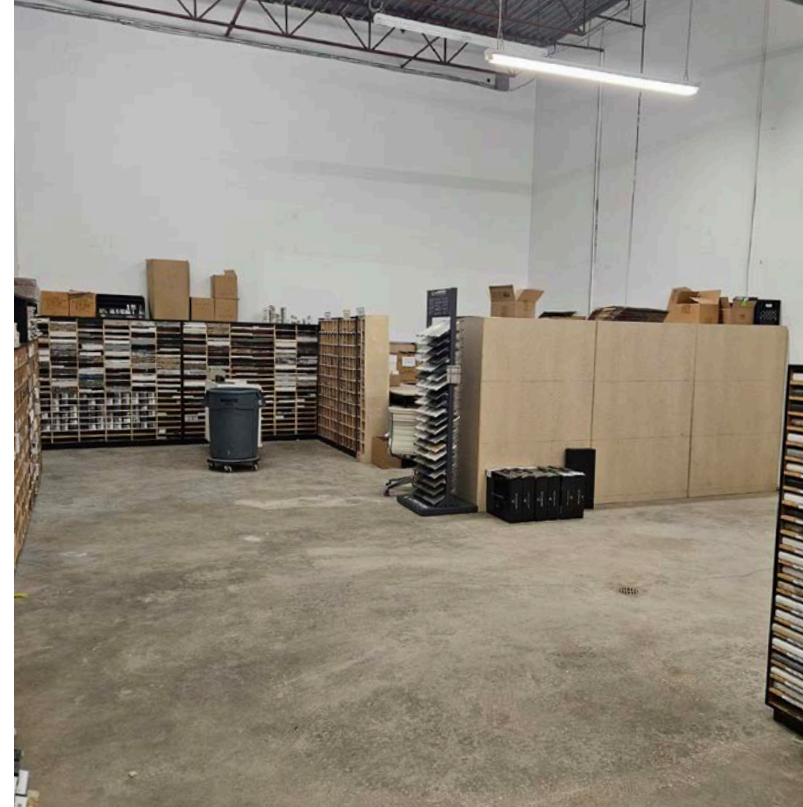
DOWNTOWN

5 SCURFIELD BLVD

A photograph of a single-story commercial building with a sign that reads "HORM INDUSTRIES". The building has a blue and white facade and is surrounded by a parking lot with several cars. A blue star icon on the map points to the location of this building.







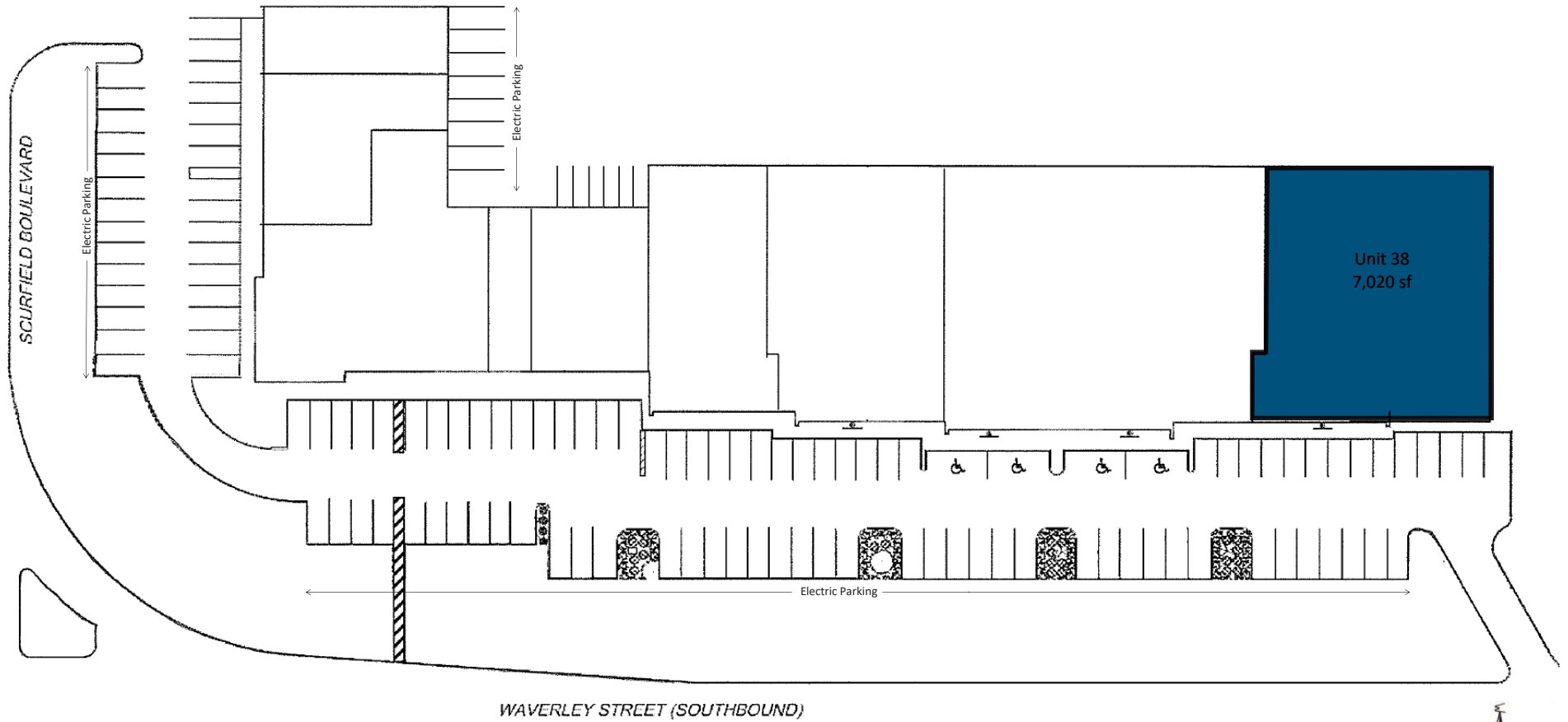
AERIAL



WAVERLEY ST

SCURFIELD BLVD

SITE PLAN





CONTACT

STEPHEN SHERLOCK
Vice President

T 204 928 5011
C 204 799 5526
E stephen.sherlock@cwstevenson.ca

RYAN MUNT
Executive Vice President
Ryan Munt Personal Real Estate Corporation

T 204 928 5015
C 204 298 1905
E ryan.munt@cwstevenson.ca



Independently Owned and Operated / A Member of the Cushman & Wakefield Alliance ©2023 Cushman & Wakefield. All rights reserved. The information contained in this communication is strictly confidential. This information has been obtained from sources believed to be reliable but has not been verified. NO WARRANTY OR REPRESENTATION, EXPRESS OR IMPLIED, IS MADE AS TO THE CONDITION OF THE PROPERTY (OR PROPERTIES) REFERENCED HEREIN OR AS TO THE ACCURACY OR COMPLETENESS OF THE INFORMATION CONTAINED HEREIN, AND SAME IS SUBMITTED SUBJECT TO ERRORS, OMISSIONS, CHANGE OF PRICE, RENTAL OR OTHER CONDITIONS, WITHDRAWAL WITHOUT NOTICE, AND TO ANY SPECIAL LISTING CONDITIONS IMPOSED BY THE PROPERTY OWNER(S). ANY PROJECTIONS, OPINIONS OR ESTIMATES ARE SUBJECT TO UNCERTAINTY AND DO NOT SIGNIFY CURRENT OR FUTURE PROPERTY PERFORMANCE.