

STEELE BUSINESS PARK

3129 RED FIFE ROAD

**BRAND NEW STATE-OF-THE-ART
INDUSTRIAL SPACE IN CENTREPORT**



Stephen Sherlock
Vice President

T 204 928 5011
C 204 799 5526
steve.sherlock@cwstevenson.ca

Ryan Munt
Executive Vice President

Ryan Munt Personal Real Estate Corporation
T 204 928 5015
C 204 298 1905
ryan.munt@cwstevenson.ca



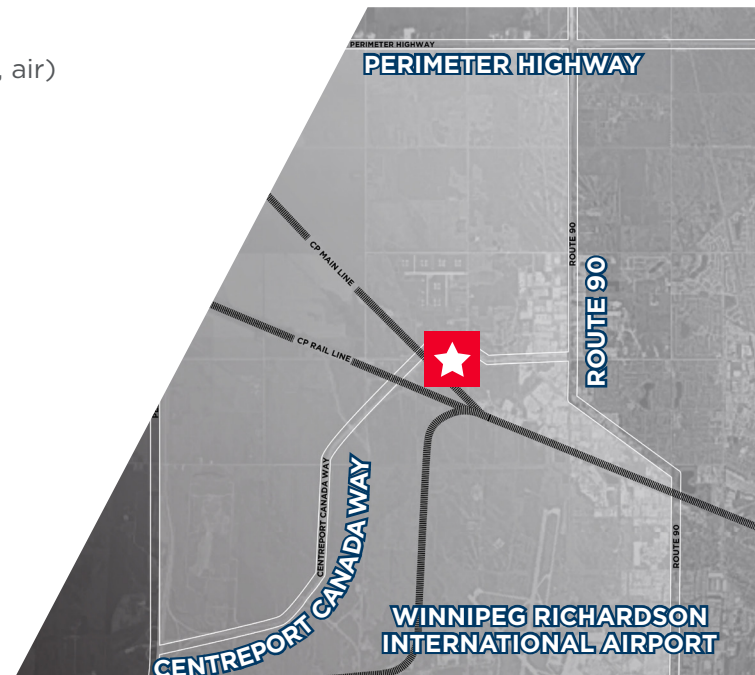
PHASE II (+/-) 5,425 SF TO (+/-) 21,765 SF

Property Highlights

- Located in CentrePort Canada, the inland port, offering unparalleled access to tri-modal transportation (road, rail, air)
- (+/-) 5,425 sf bays
- Dock and grade loading
- 28' clear ceiling height
- Brand new construction
- Excellent exposure on CentrePort Canada Way
- All major amenities nearby
- Quick access to major highways and key trade corridors
- Zoned I2

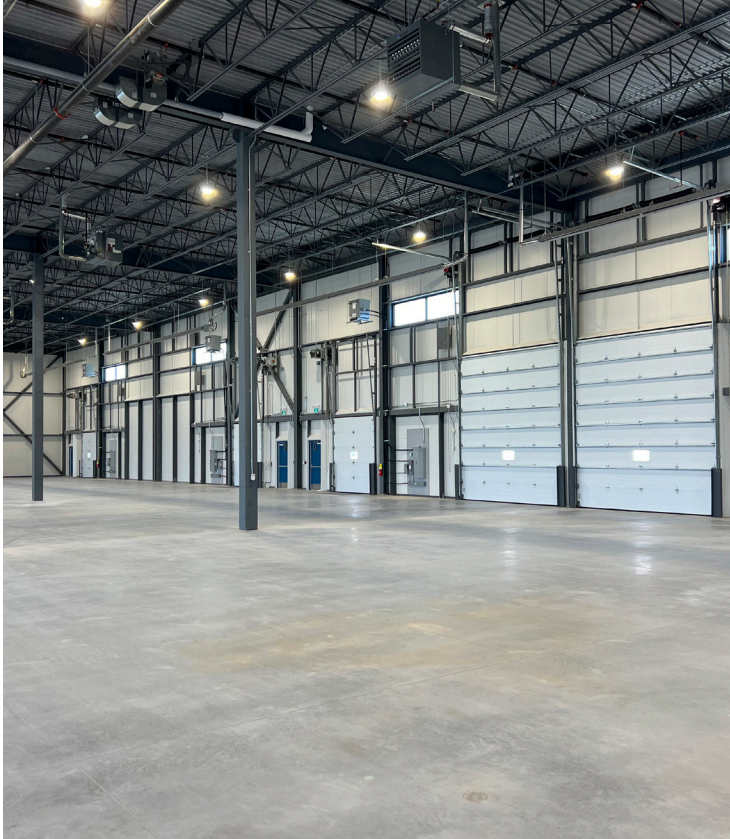
Lease Rate: TBD

CAM & Tax: \$3.99 psf (2024 est.)



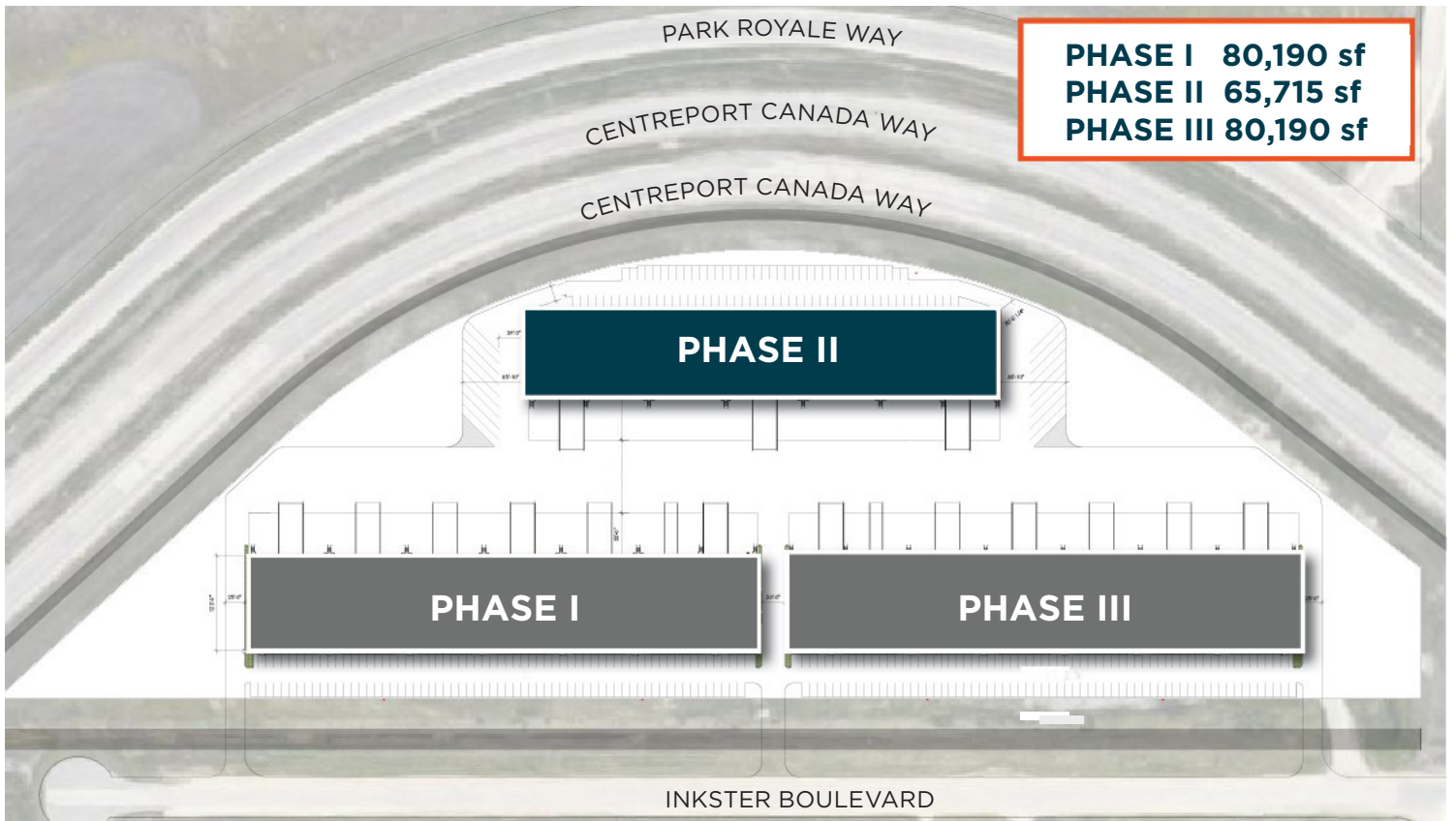
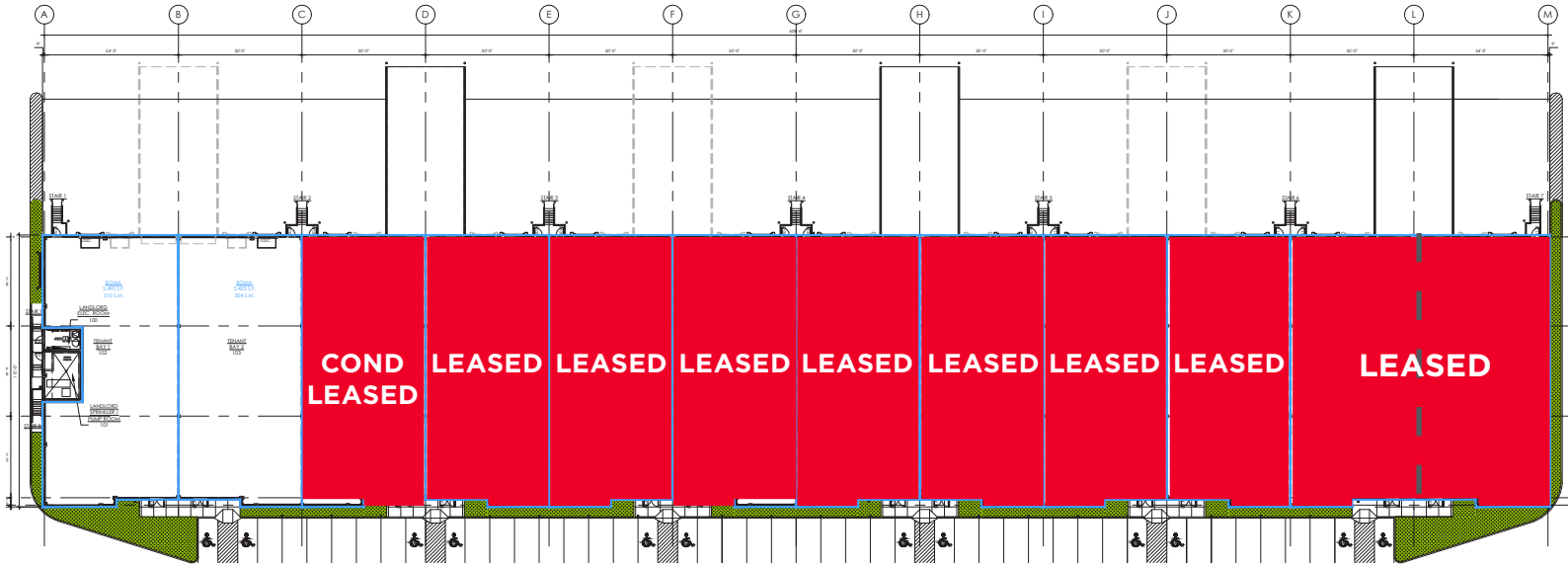
EXCELLENT OPPORTUNITY TO MOVE INTO A NEW HIGH EXPOSURE NEW GENERATION INDUSTRIAL PARK

PHOTOS

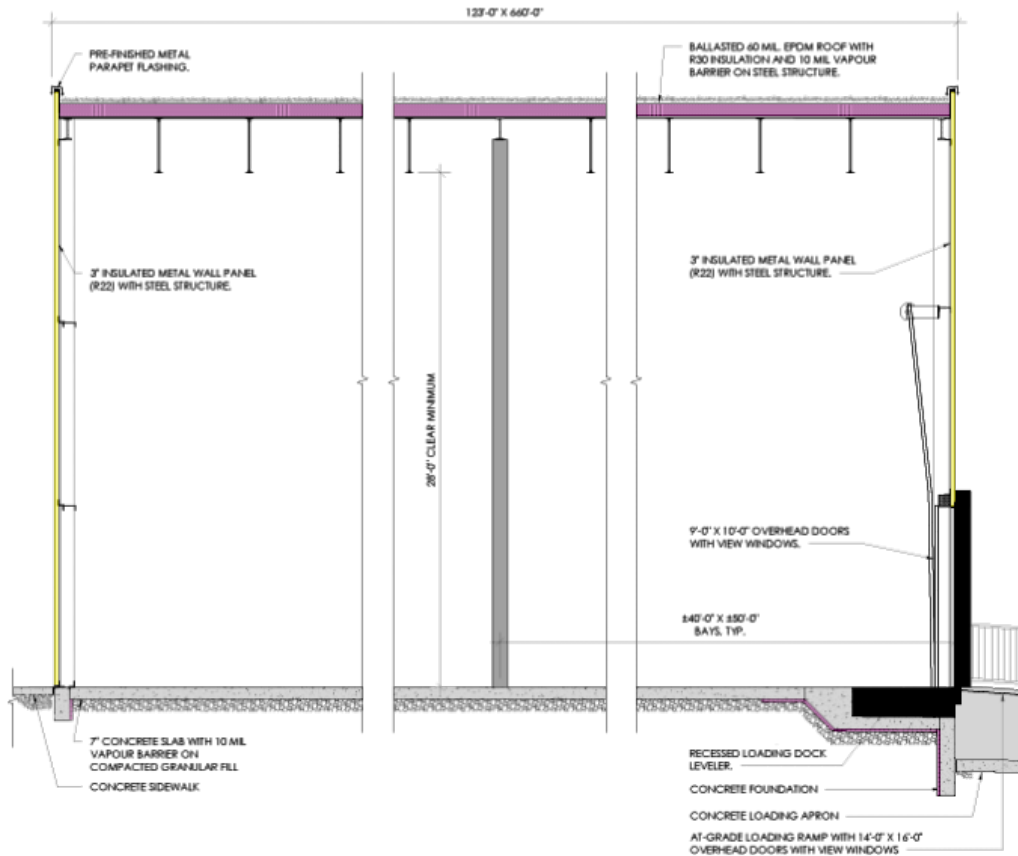


SITE PLAN

PHASE II 65,715 sf



BUILDING SPECIFICATIONS



Contractor	Concord Projects Ltd.
Square Footage (+/-)	65,715 sf (Phase II)
Dimensions (+/-)	108' Deep x 608' Wide
Acres (+/-)	17 Acres (Total Site)
Slab	7" Thick Slab on Grade
Column Spacing (+/-)	50' x 36' Spans
Walls	3" Thick Insulated Metal Wall Panels for all of the Walls (R22)
Loading Doors	9' x 10' Dock Doors with 35,000 Lb. Capacity Automatic Hydraulic Electrically-Operated Dock Levelers 14' x 16' Drive-in Doors with Concrete Ramps - Electrically-Operated
Parking Spaces	87 Stalls (Phase II)
Electrical	200 AMP service per bay
Ceiling Height	28' Clear to Underside of Roof Joists
Sprinkler Type	ESFR System
Roofing System	Loose-Laid EPDM with Ballast (R30)
HVAC	Suspended gas fired unit heaters and radiant heat

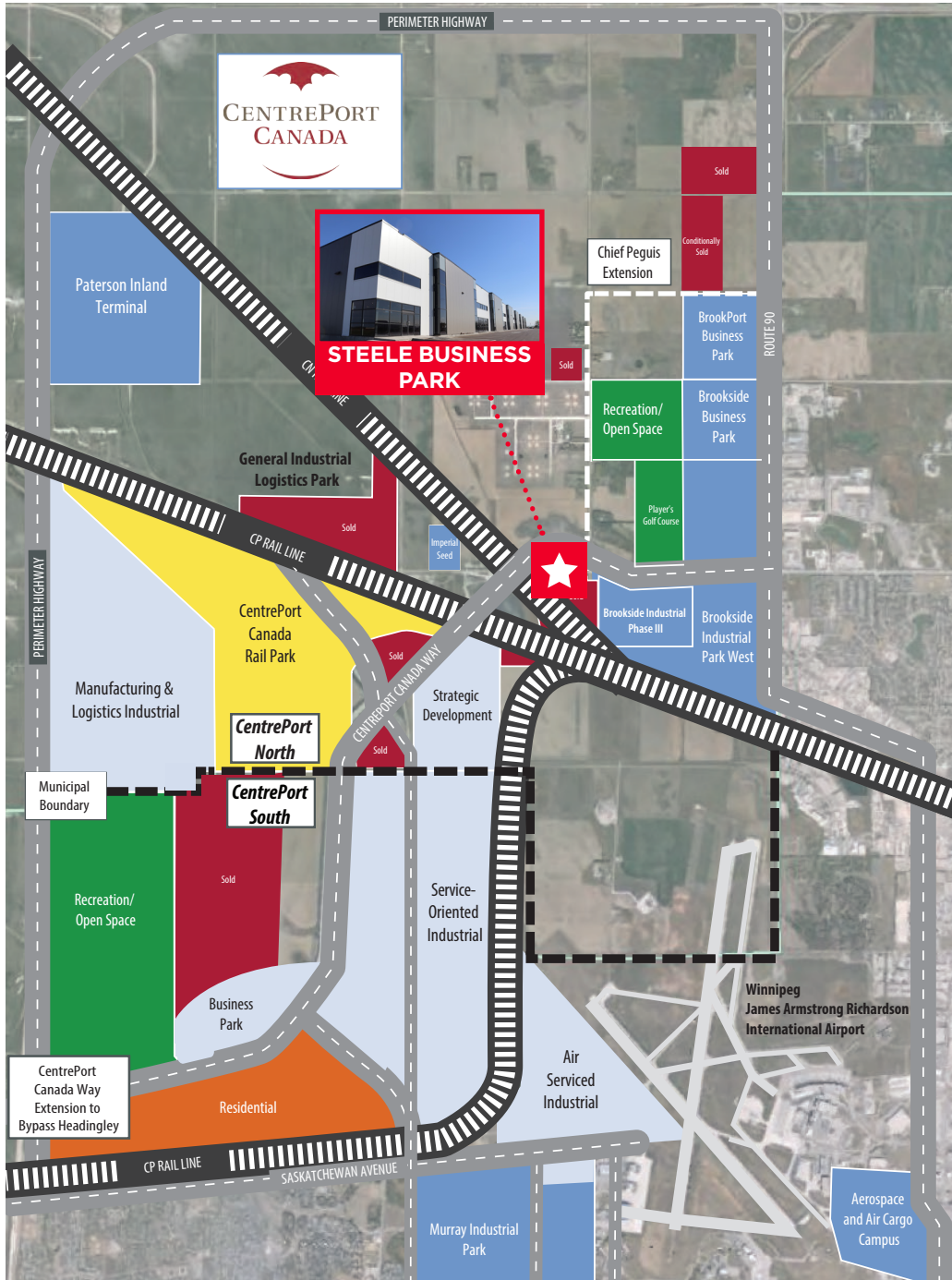
LOCATION MAP



- 1** Winnipeg Richardson International Airport & Airport Campus
 - Air Canada Cargo
 - Cargo Jet
 - FedEx
 - Purolator
 - Standard Aero
 - UPS
- 2** Future Residential Development
- 3** CentrePort Canada Rail Park

- 4** Brookside Industrial Park West Phase III
 - Canada West Limited
 - Groupe Touchette
 - Freightliner Manitoba
 - National Research Council's Advanced Manufacturing Facility
- 5** Brookside Industrial Park West
 - Fort Garry Fire Trucks
 - Maxim Truck & Trailer
 - Pacific Coast Express
 - Payne Transportation
 - Trailer Wizards

- 6** Brookside Business Park
 - FedEx Freight
 - SMS Equipment
 - The Rosedale Group
 - Trans X
 - United Rentals
- 7** BrookPort Business Park
 - Merit Functional Food Corporation
- 8** Red River College



A RAPIDLY-DEVELOPING TRANSPORTATION HUB

- **Tri-modal inland port** situated in the heart of the continent in Winnipeg, Manitoba
- 20,000 acres of **prime industrial land**
- **Foreign Trade Zone** advantages
- **Dedicated planning resource** to expedite the planning and land development approval process
- **Affordable skilled labour** force in close proximity
- Renewable, reliable, low-cost energy
- Situated one hour north of the Canada-US border
- **\$174 million of development and building permits issued** to date since 2019 (750,000+ sf of industrial space under construction)
- Major trucking centre with **1000+ for-hire trucking companies**
- \$1 billion in supporting highway infrastructure

“Development activity at CentrePort over the last year has skyrocketed, with the value of building permits issued increasing 1000% over 2018 values. With planning complete and strategic infrastructure in place, we are seeing an incredible response from the market, including for the first time ever, significant development on spec.”

- Diane Gray, President & CEO, CentrePort Canada Inc.



Stephen Sherlock
Vice President

T 204 928 5011
C 204 799 5526
steve.sherlock@cwstevenson.ca

Ryan Munt
Executive Vice President

Ryan Munt Personal Real Estate Corporation
T 204 928 5015
C 204 298 1905
ryan.munt@cwstevenson.ca

Independently Owned and Operated / A Member of the Cushman & Wakefield Alliance

©2023 Cushman & Wakefield. All rights reserved. The information contained in this communication is strictly confidential. This information has been obtained from sources believed to be reliable but has not been verified. NO WARRANTY OR REPRESENTATION, EXPRESS OR IMPLIED, IS MADE AS TO THE CONDITION OF THE PROPERTY (OR PROPERTIES) REFERENCED HEREIN OR AS TO THE ACCURACY OR COMPLETENESS OF THE INFORMATION CONTAINED HEREIN, AND SAME IS SUBMITTED SUBJECT TO ERRORS, OMISSIONS, CHANGE OF PRICE, RENTAL OR OTHER CONDITIONS, WITHDRAWAL WITHOUT NOTICE, AND TO ANY SPECIAL LISTING CONDITIONS IMPOSED BY THE PROPERTY OWNER(S). ANY PROJECTIONS, OPINIONS OR ESTIMATES ARE SUBJECT TO UNCERTAINTY AND DO NOT SIGNIFY CURRENT OR FUTURE PROPERTY PERFORMANCE.

