

116-120 Paramount Road

Office/Warehouse Space For Lease



Chris Macsymic
Senior Vice President & Principal

Chris Macsymic Personal Real Estate Corporation
T 204 928 5019
C 204 997 6547
chris.macsymic@cwstevenson.ca

Shae Halpin
Associate

T 204 560 2536
C 204 558 6071
shae.halpin@cwstevenson.ca





(+/-) 4,528 sf available

PROPERTY HIGHLIGHTS

- Warehouse/office space for lease in the heart of Inkster Industrial Park
- Situated one block north of Inkster Boulevard
- 4 grade loading doors
- 14'10" clear ceiling height
- Ample parking on-site
- Available immediately
- Zoned M2

Lease Rate: \$9.50 psf Net
CAM & Tax: \$5.00 psf (2023 est.)

FOR LEASE

116-120 Paramount Road



AREA MAP




16 Minutes to Downtown
17 Minutes to the Airport
15 Minutes to Trans Canada Highway
90 Minutes to the US Border

FOR LEASE

116-120 Paramount Road



Independently Owned and Operated / A Member of the Cushman & Wakefield Alliance ©2022 Cushman & Wakefield. All rights reserved. The information contained in this communication is strictly confidential. This information has been obtained from sources believed to be reliable but has not been verified. NO WARRANTY OR REPRESENTATION, EXPRESS OR IMPLIED, IS MADE AS TO THE CONDITION OF THE PROPERTY (OR PROPERTIES) REFERENCED HEREIN OR AS TO THE ACCURACY OR COMPLETENESS OF THE INFORMATION CONTAINED HEREIN, AND SAME IS SUBMITTED SUBJECT TO ERRORS, OMISSIONS, CHANGE OF PRICE, RENTAL OR OTHER CONDITIONS, WITHDRAWAL WITHOUT NOTICE, AND TO ANY SPECIAL LISTING CONDITIONS IMPOSED BY THE PROPERTY OWNER(S). ANY PROJECTIONS, OPINIONS OR ESTIMATES ARE SUBJECT TO UNCERTAINTY AND DO NOT SIGNIFY CURRENT OR FUTURE PROPERTY PERFORMANCE.

FOR LEASE

116-120 Paramount Road

SITE PLAN

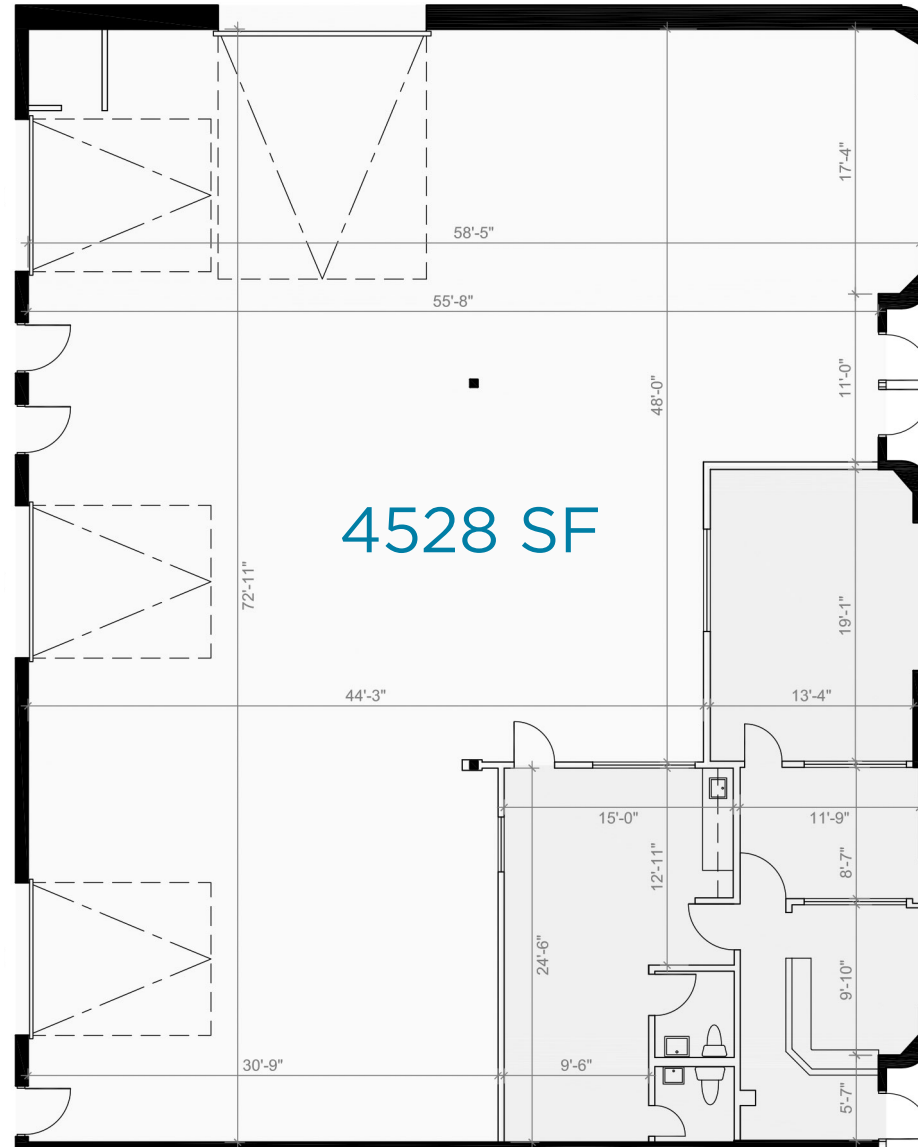


FOR LEASE

116-120 Paramount Road



FLOOR PLAN



Independently Owned and Operated / A Member of the Cushman & Wakefield Alliance ©2022 Cushman & Wakefield. All rights reserved. The information contained in this communication is strictly confidential. This information has been obtained from sources believed to be reliable but has not been verified. NO WARRANTY OR REPRESENTATION, EXPRESS OR IMPLIED, IS MADE AS TO THE CONDITION OF THE PROPERTY (OR PROPERTIES) REFERENCED HEREIN OR AS TO THE ACCURACY OR COMPLETENESS OF THE INFORMATION CONTAINED HEREIN, AND SAME IS SUBMITTED SUBJECT TO ERRORS, OMISSIONS, CHANGE OF PRICE, RENTAL OR OTHER CONDITIONS, WITHDRAWAL WITHOUT NOTICE, AND TO ANY SPECIAL LISTING CONDITIONS IMPOSED BY THE PROPERTY OWNER(S). ANY PROJECTIONS, OPINIONS OR ESTIMATES ARE SUBJECT TO UNCERTAINTY AND DO NOT SIGNIFY CURRENT OR FUTURE PROPERTY PERFORMANCE.



Chris Macsymic
Senior Vice President & Principal

Chris Macsymic Personal Real Estate Corporation
T 204 928 5019
C 204 997 6547
chris.macsymic@cwstevenson.ca

Shae Halpin
Associate

T 204 560 2536
C 204 558 6071
shae.halpin@cwstevenson.ca

